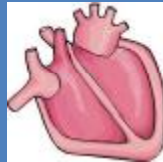




### Essais Précliniques

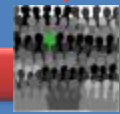


### Essais Cliniques

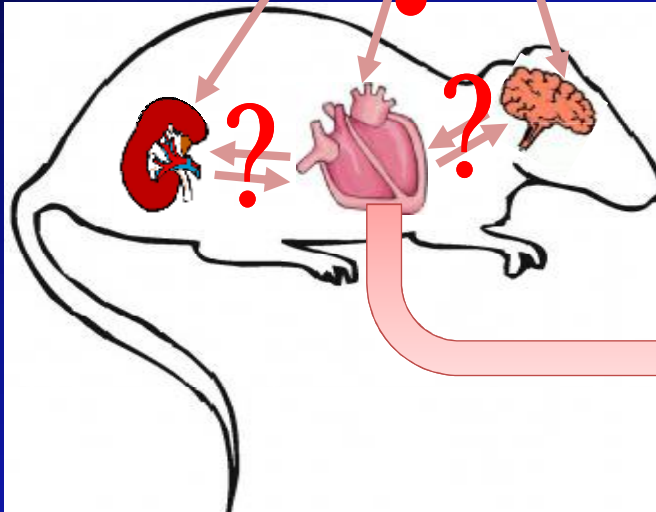
Ph. 1

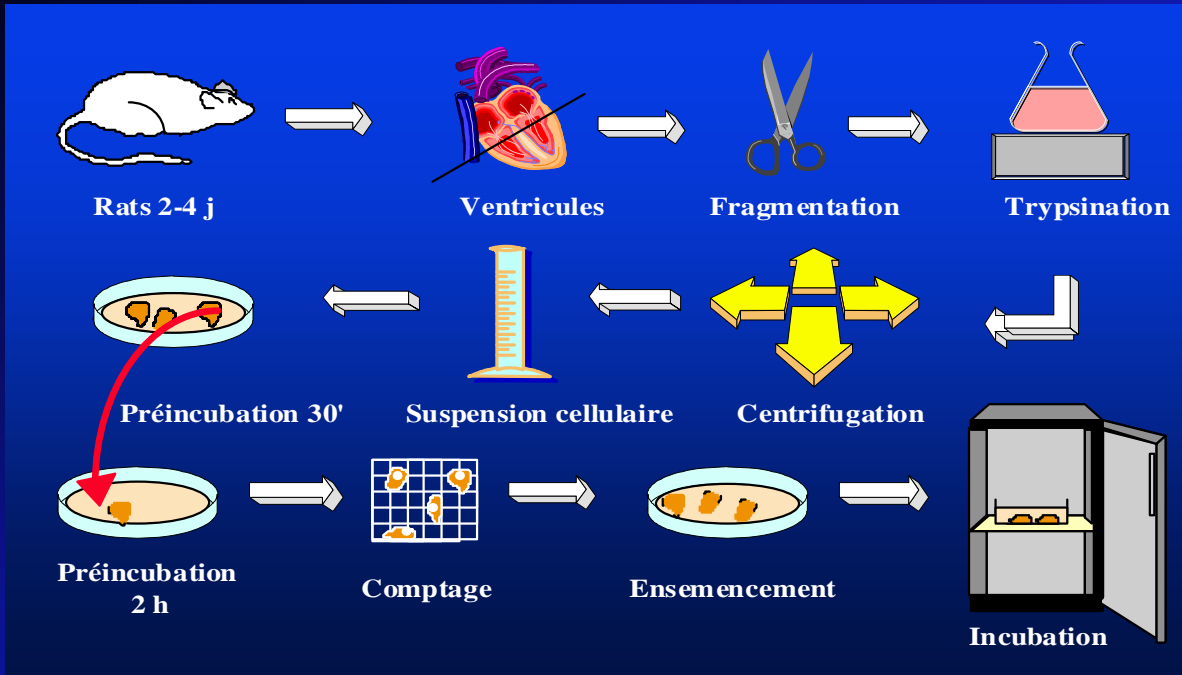


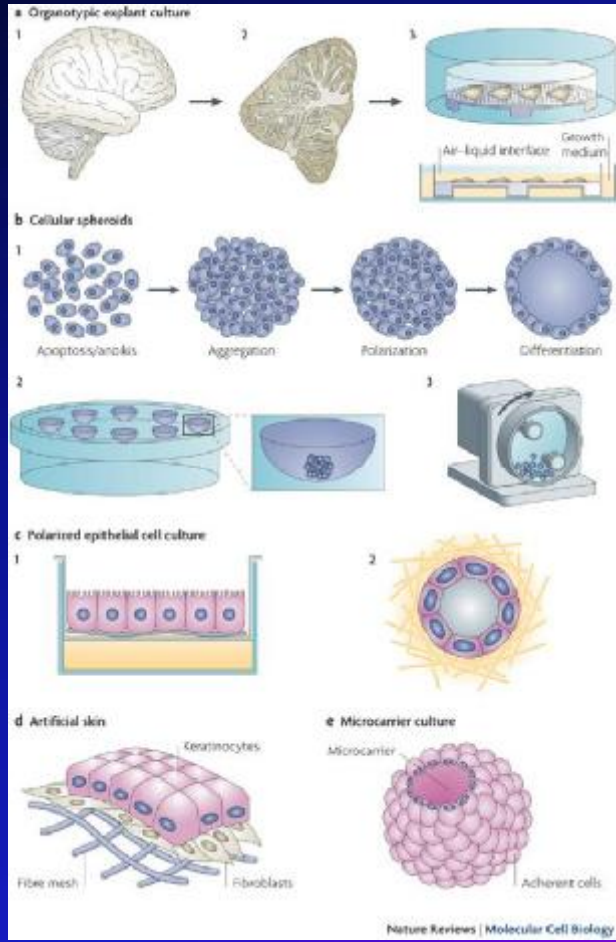
Ph. 2



Ph. 3







Milieux  
 de  
 Culture

Na+  
 K+  
 Ca2+  
 Cl-  
 .  
 .  
 .  
 GLU

VITAMIN  
 C  
 B12

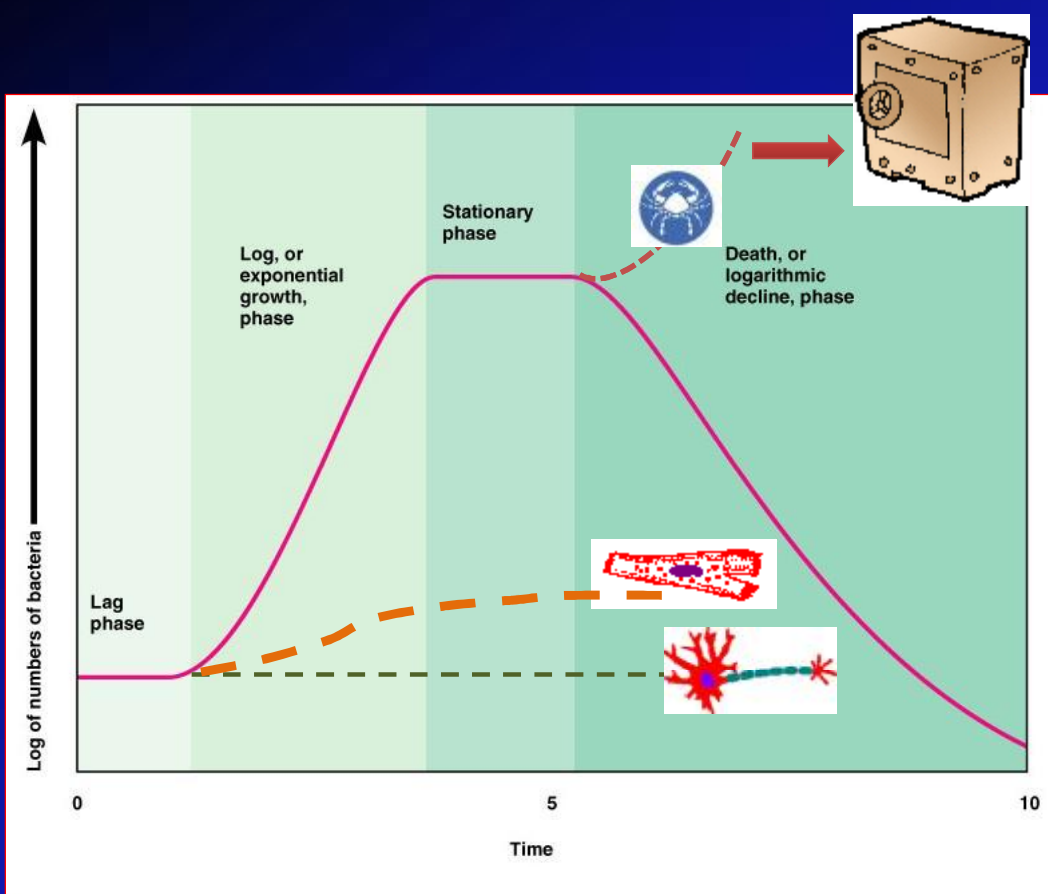
♀ hormone

Expériences

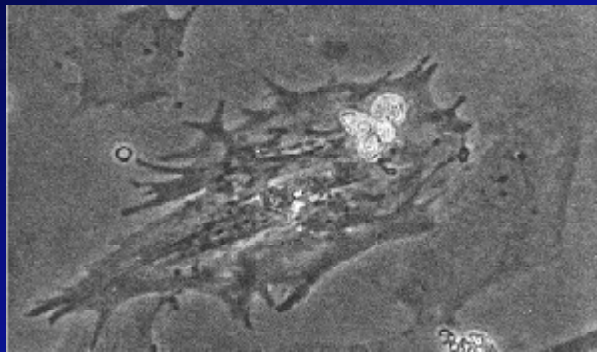
Métabolismes.

Prolifération

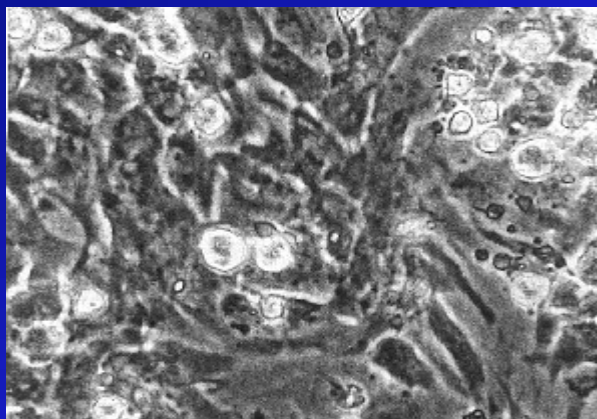


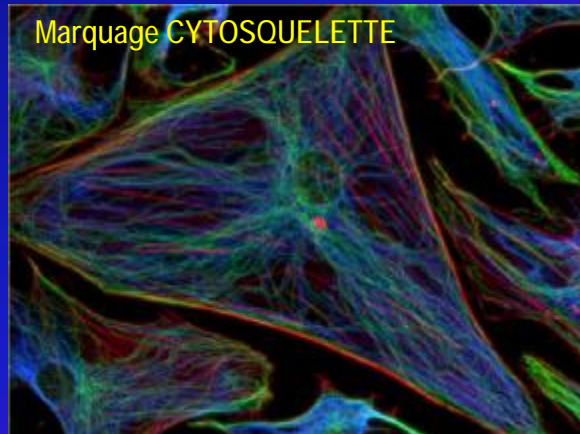
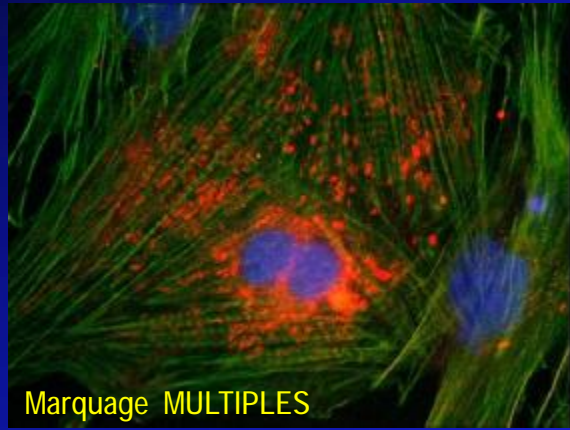


Low density culture

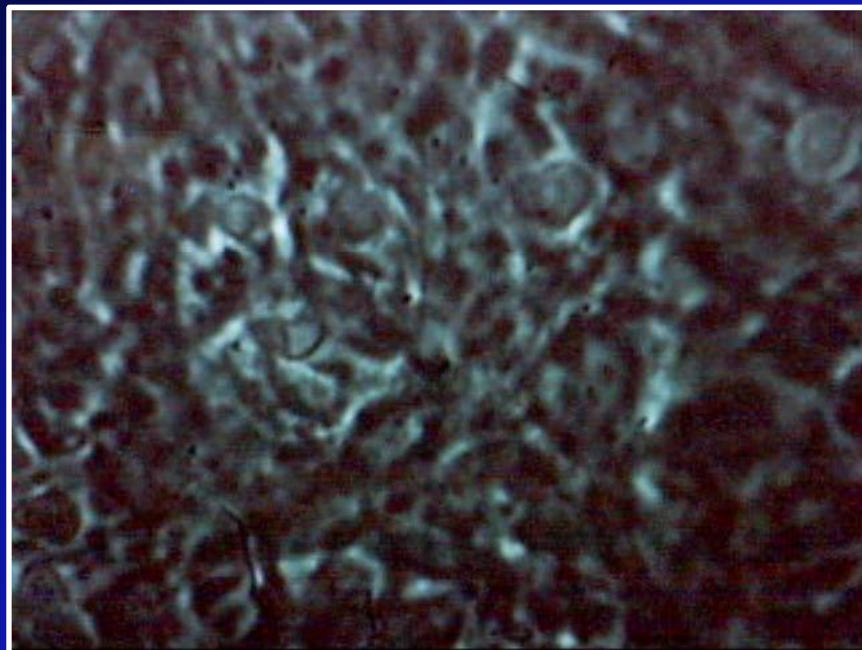


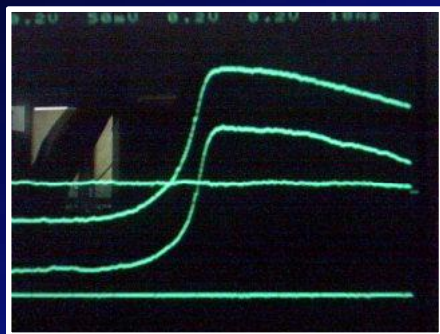
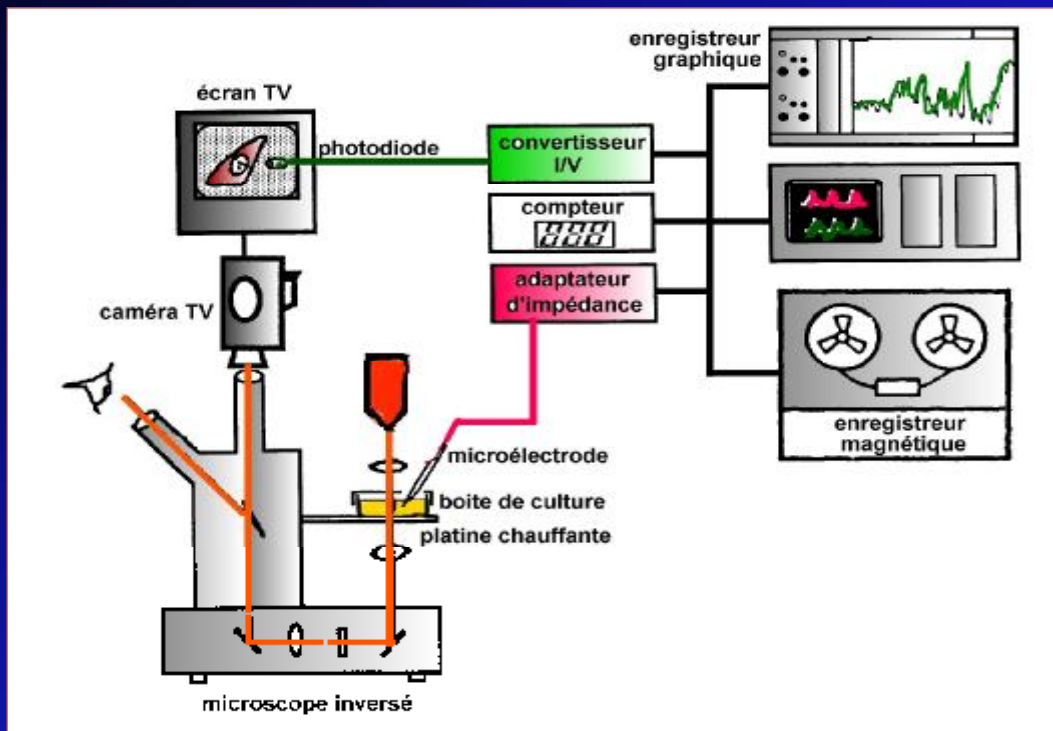
Confluent culture



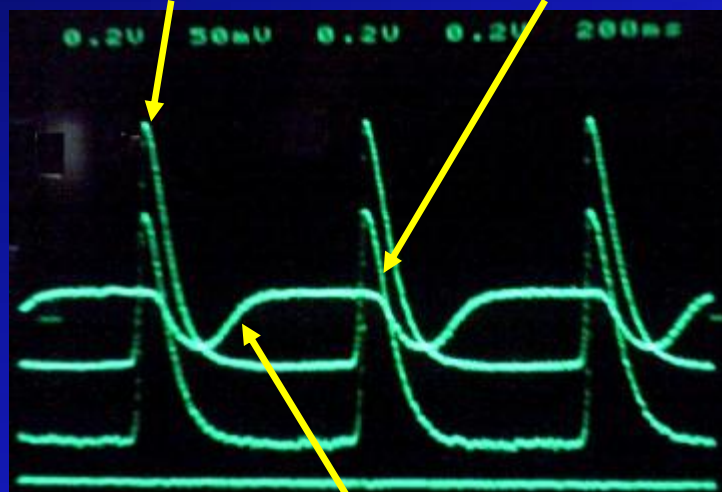
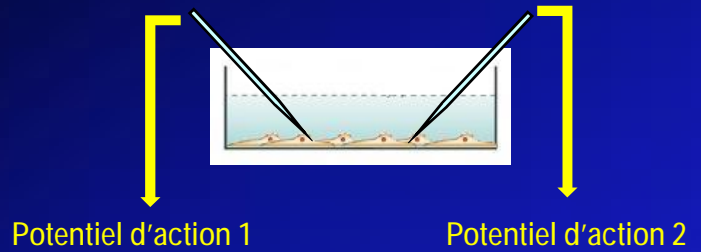


Culture de cellules musculaires cardiaques



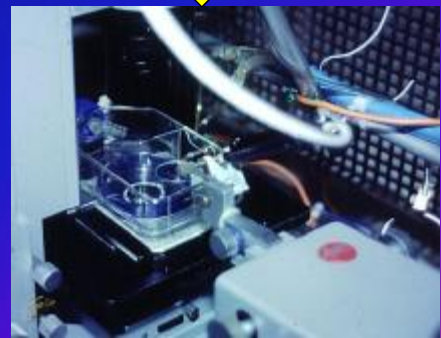
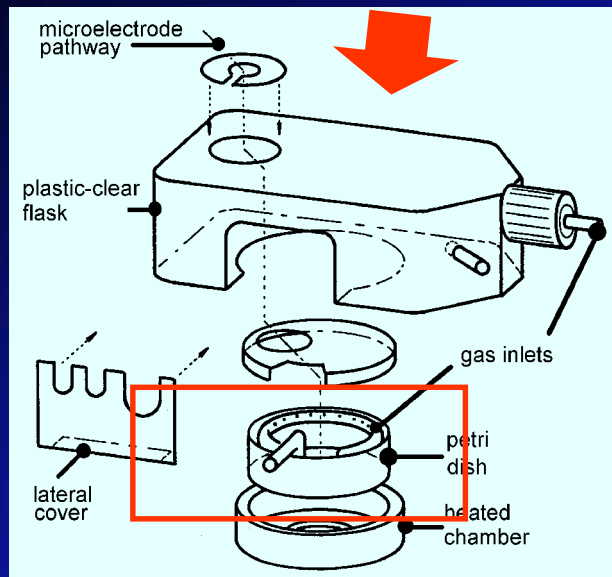


10 ms

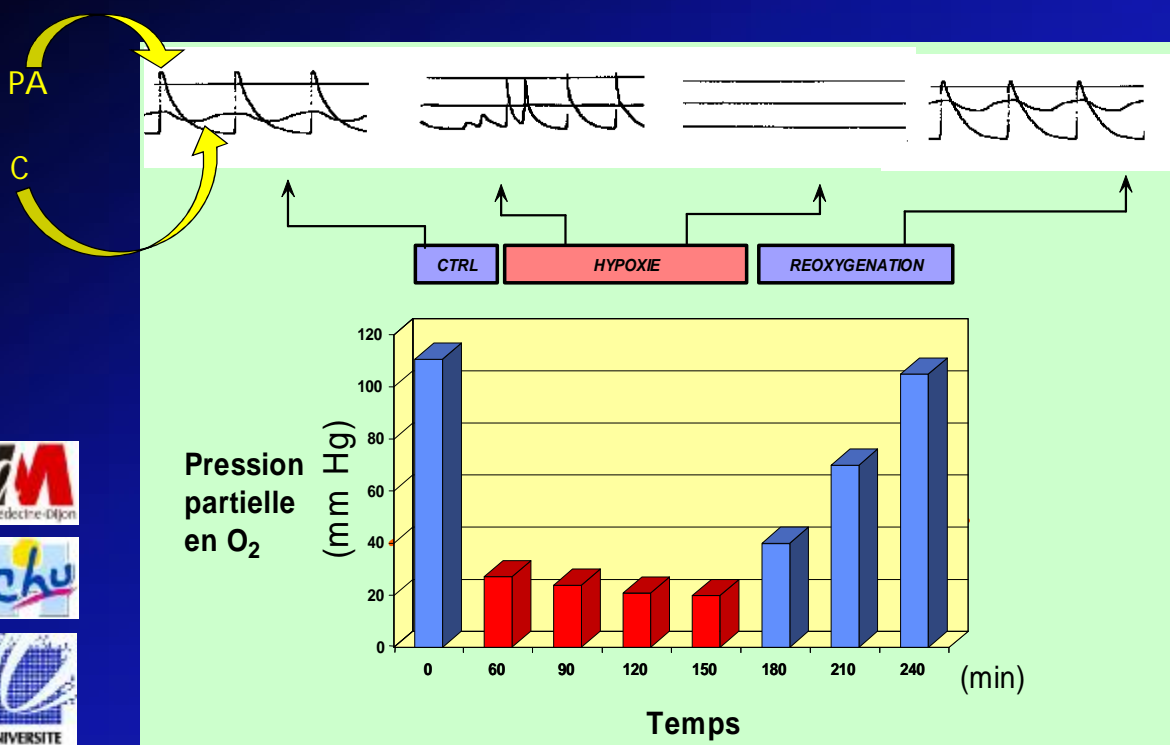




# Gas-controlled chambers (1)



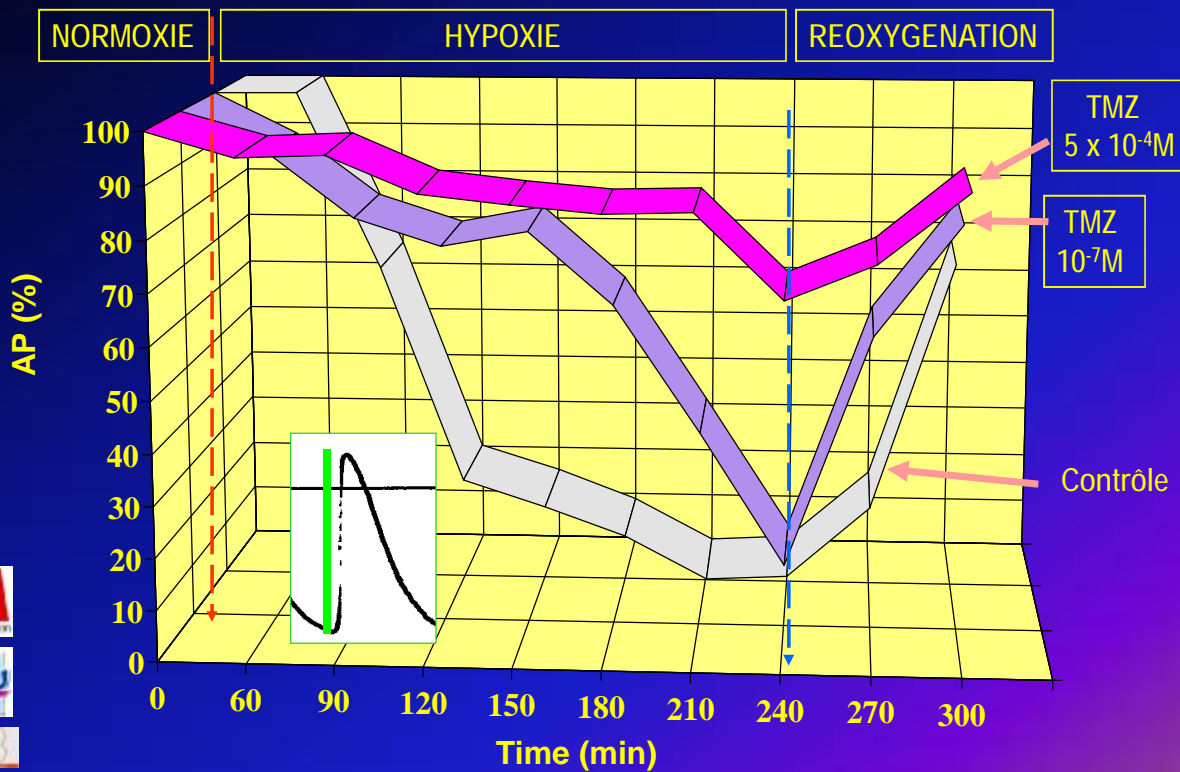
# Time-related changes in $PO_2$ in the experimental medium (in presence of the cells)



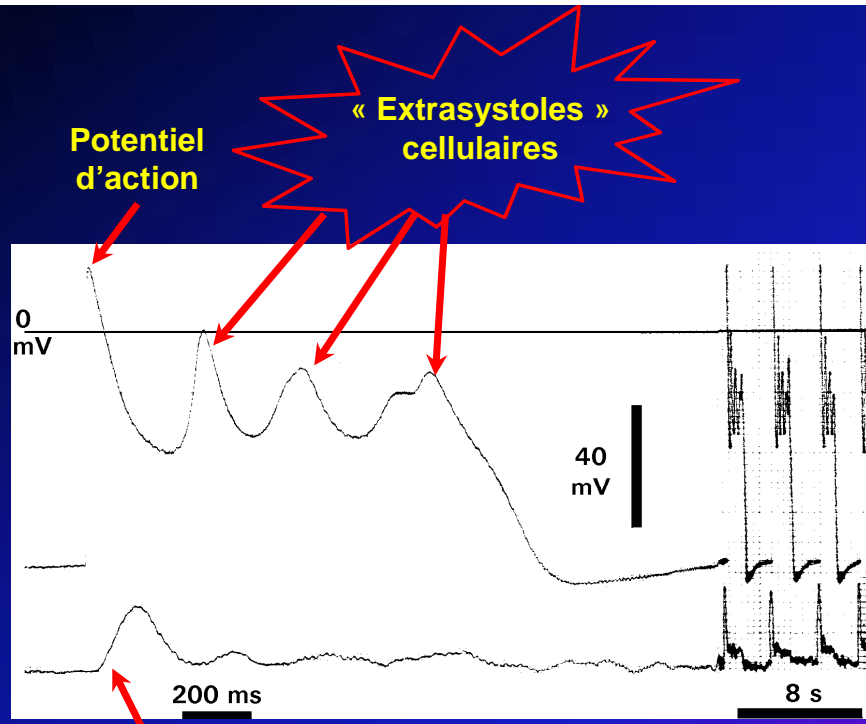
**CHAMBRE  
 « 24 boîtes » :  
 BIOCHIMIE**



[Trimetazidine.co.uk](http://Trimetazidine.co.uk)

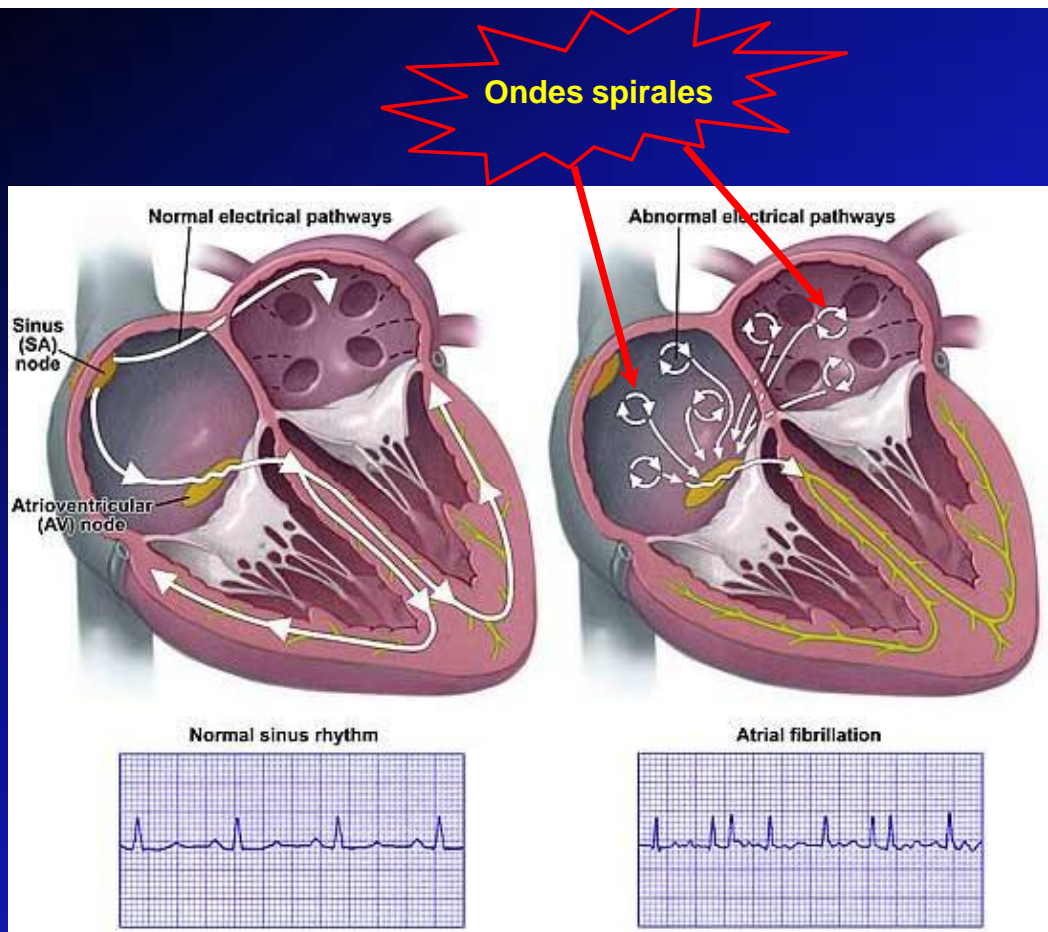


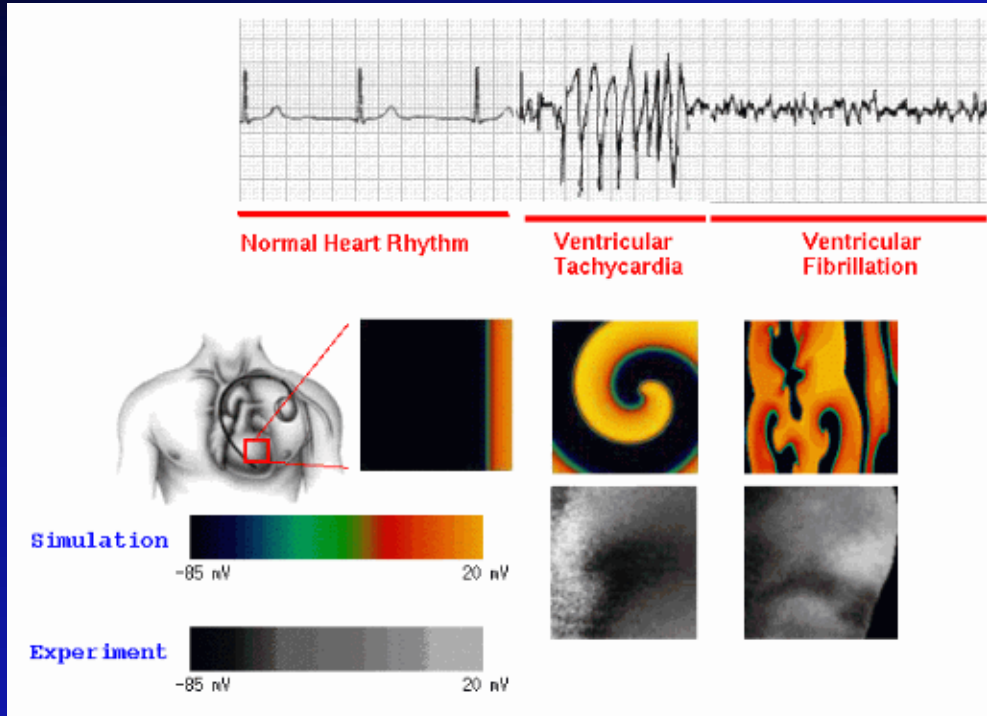




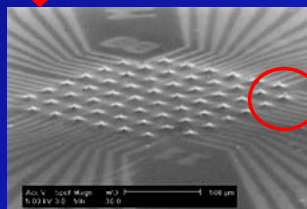
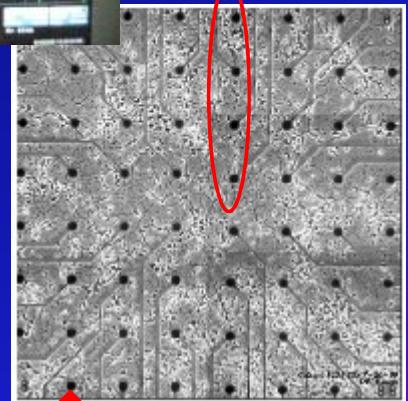
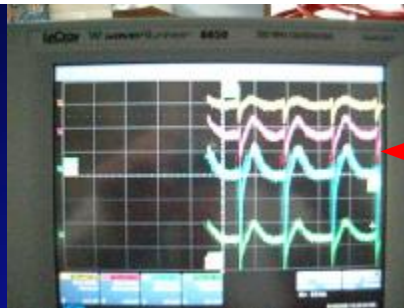
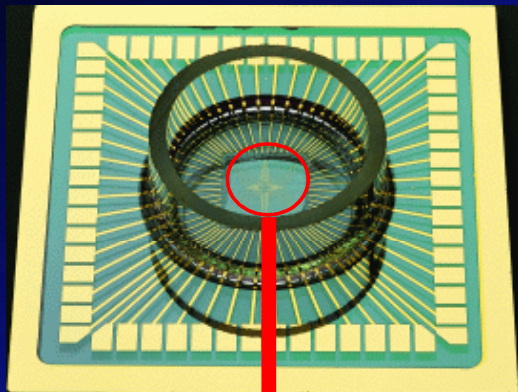
contraction

Trimétazidine + Glucose

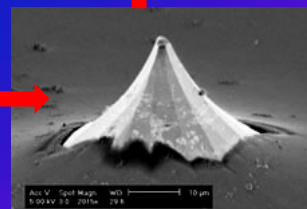




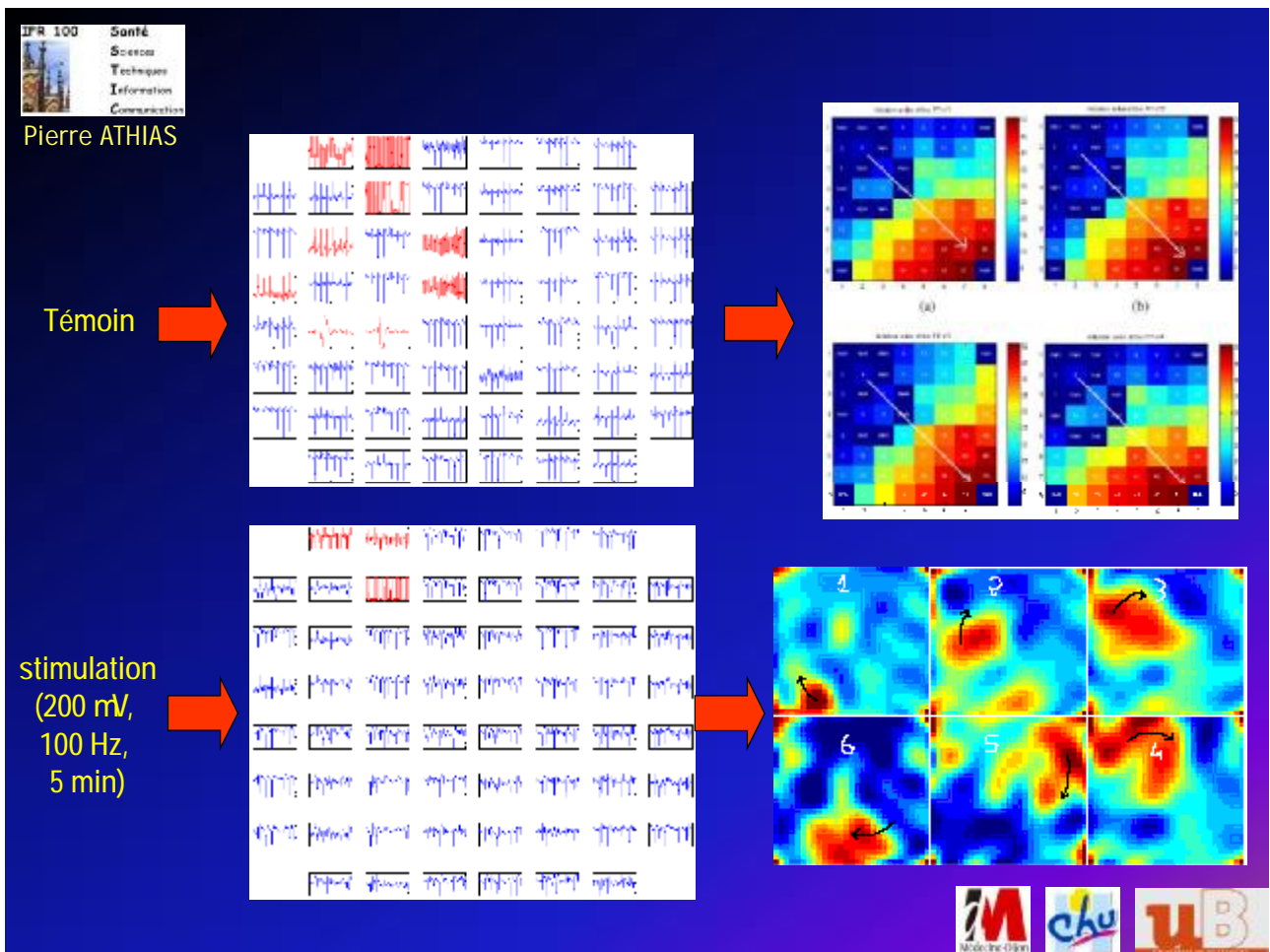
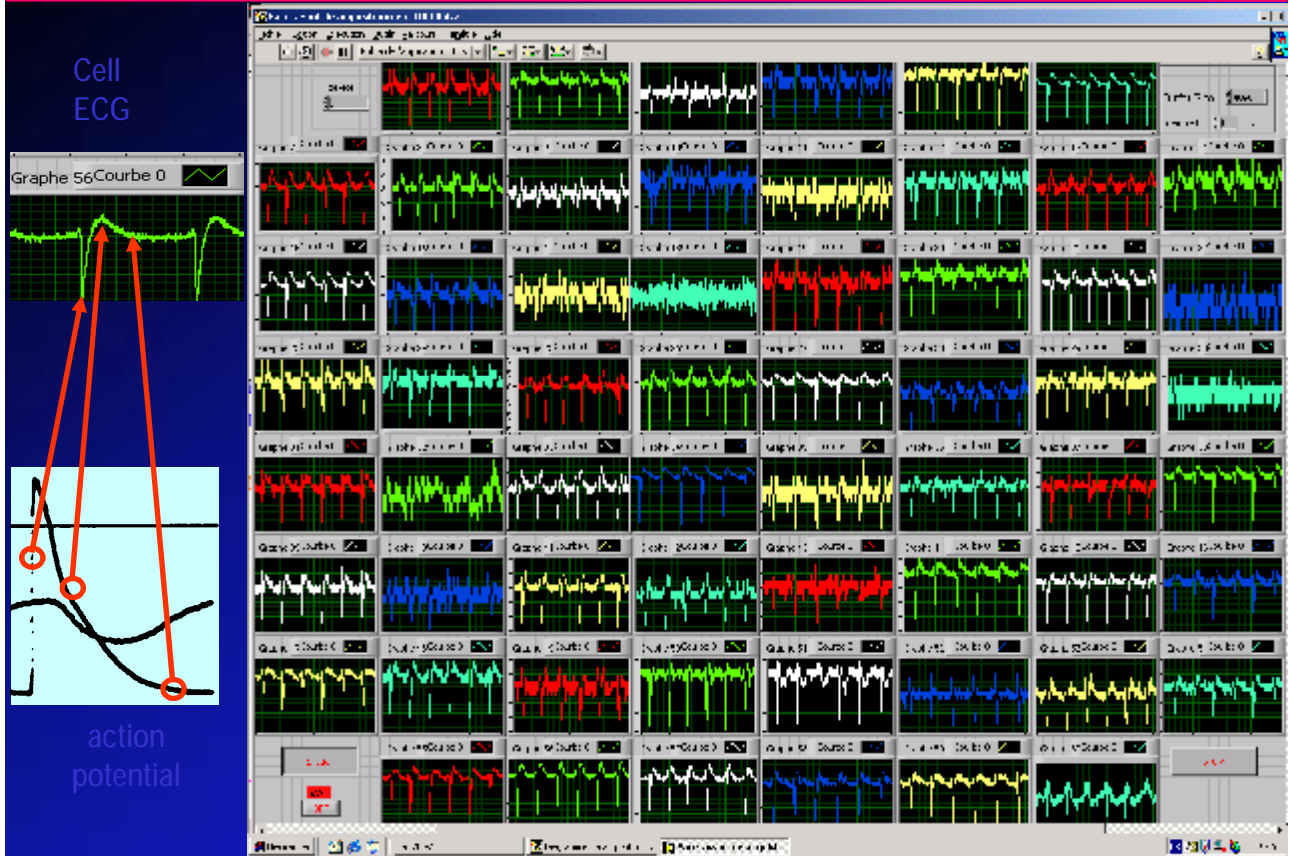
Boite de culture à  
 aire multiélectrode  
 Micro-electrode array  
 (MEA)

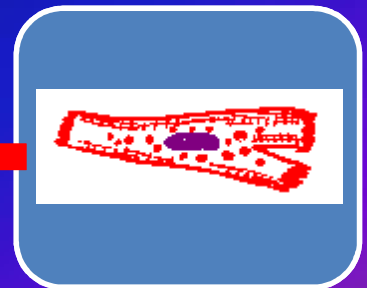
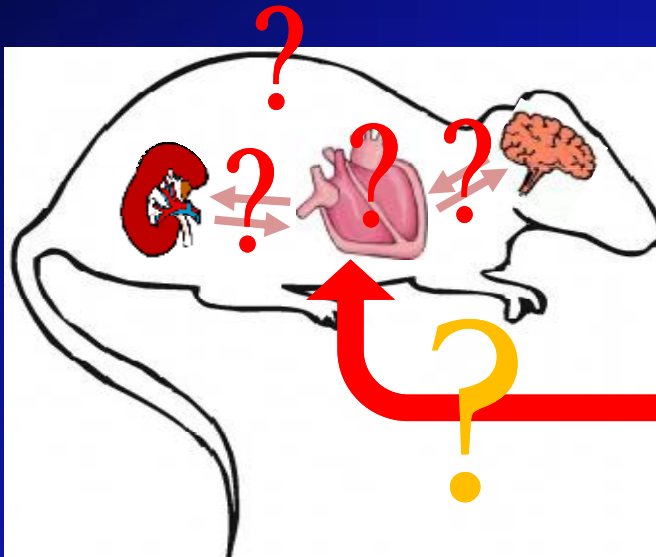
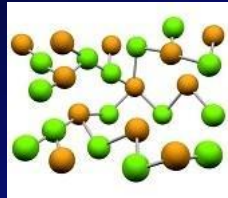
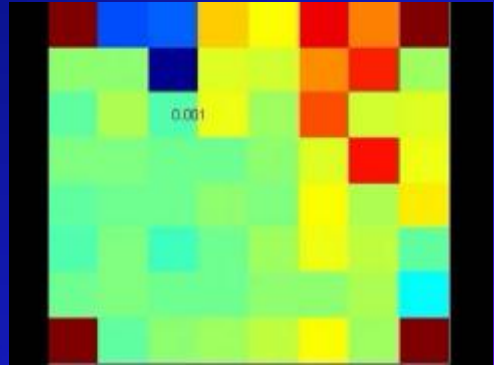
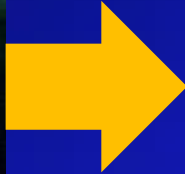


64 x



# Field potential signals





Pierre ATHIAS

