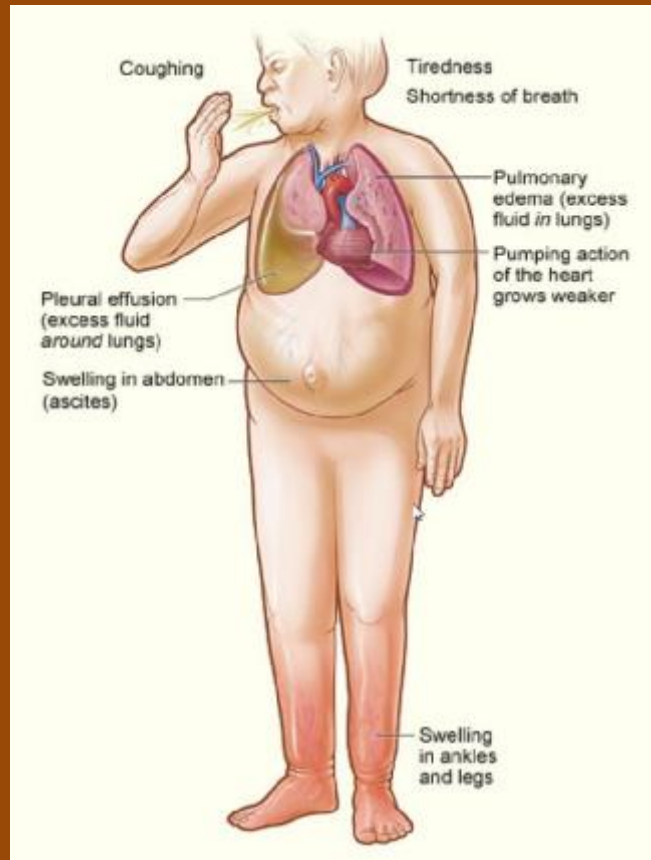




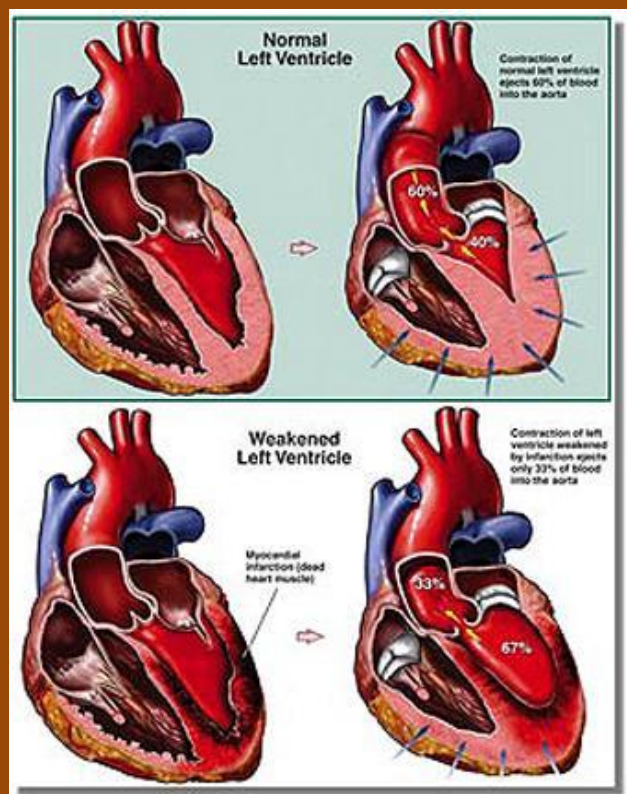
Pierre
ATHIAS

L'insuffisance Cardiaque



Pierre
ATHIAS

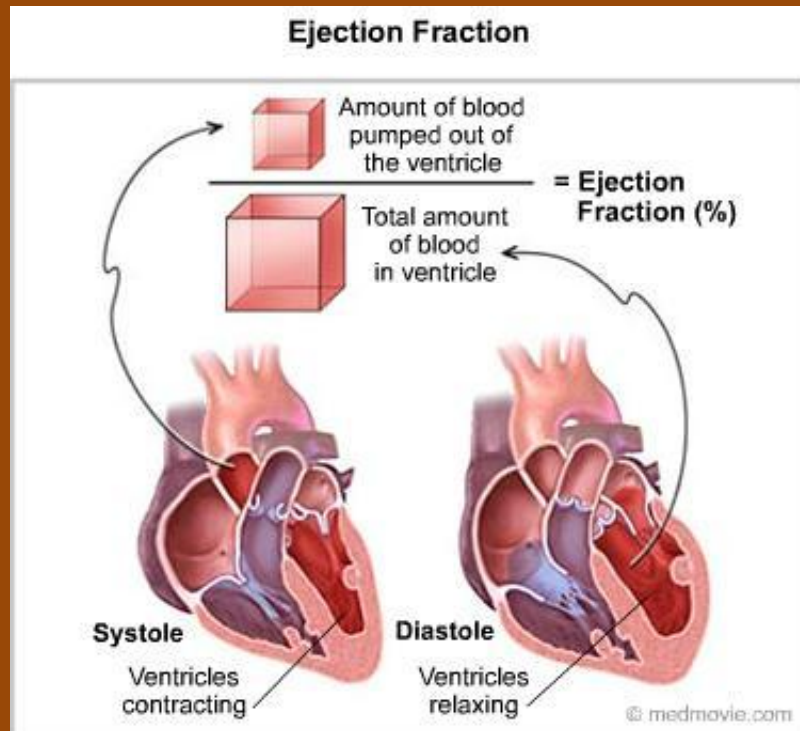
Les insuffisances Cardiaques





Pierre
ATHIAS

L'index d'efficacité: La Fraction d'Ejection



New Approach to the Classification of Heart Failure

Stage • Patient Description

A

• High risk for developing heart failure (HF)

- Hypertension
- CAD
- Diabetes mellitus
- Family history of cardiomyopathy

B

• Asymptomatic HF

- Previous MI
- LV systolic dysfunction, LVH
- Asymptomatic valvular disease

C

• Symptomatic HF

- Known structural heart disease
- Shortness of breath and fatigue
- Reduced exercise tolerance

D

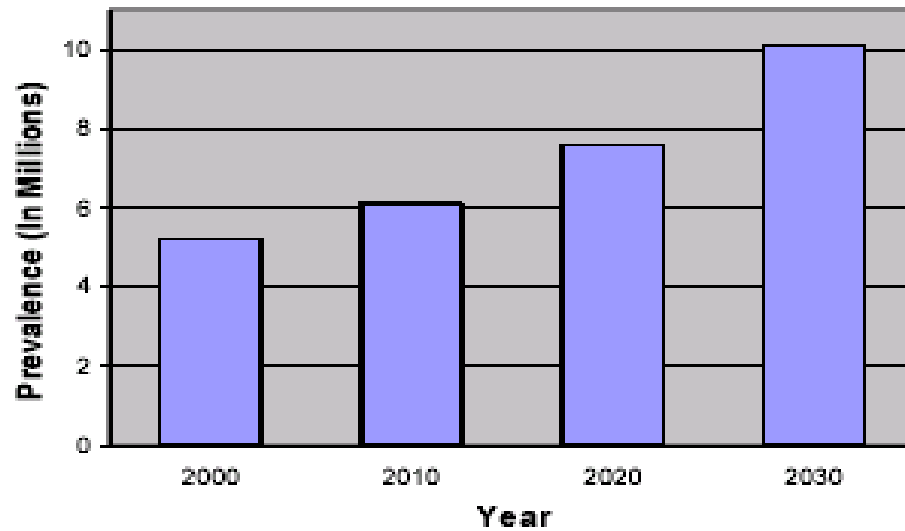
• Refractory end-stage HF

- Marked symptoms at rest despite maximal medical therapy (eg, those who are recurrently hospitalized)



Pierre
ATHIAS

PROJECTED GROWTH OF HEART FAILURE PREVALENCE (NORTH AMERICA: 2000-2030)

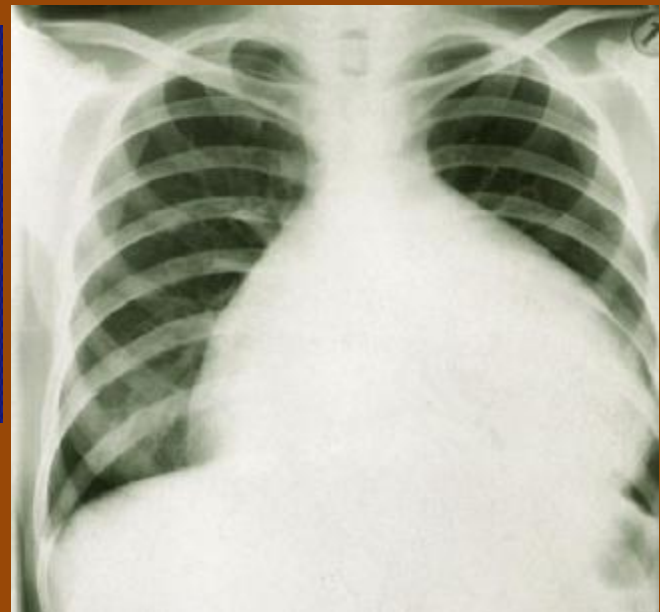
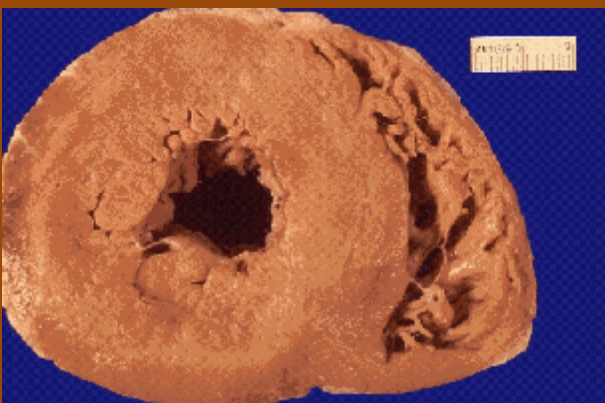


Source: American Heart Association



Pierre
ATHIAS

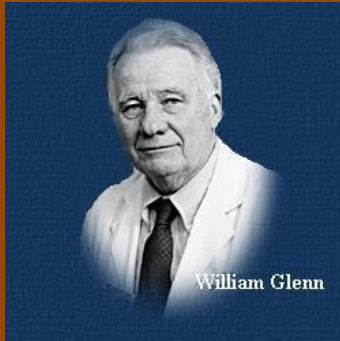
Insuffisances Cardiaques Congestive & Dilatée



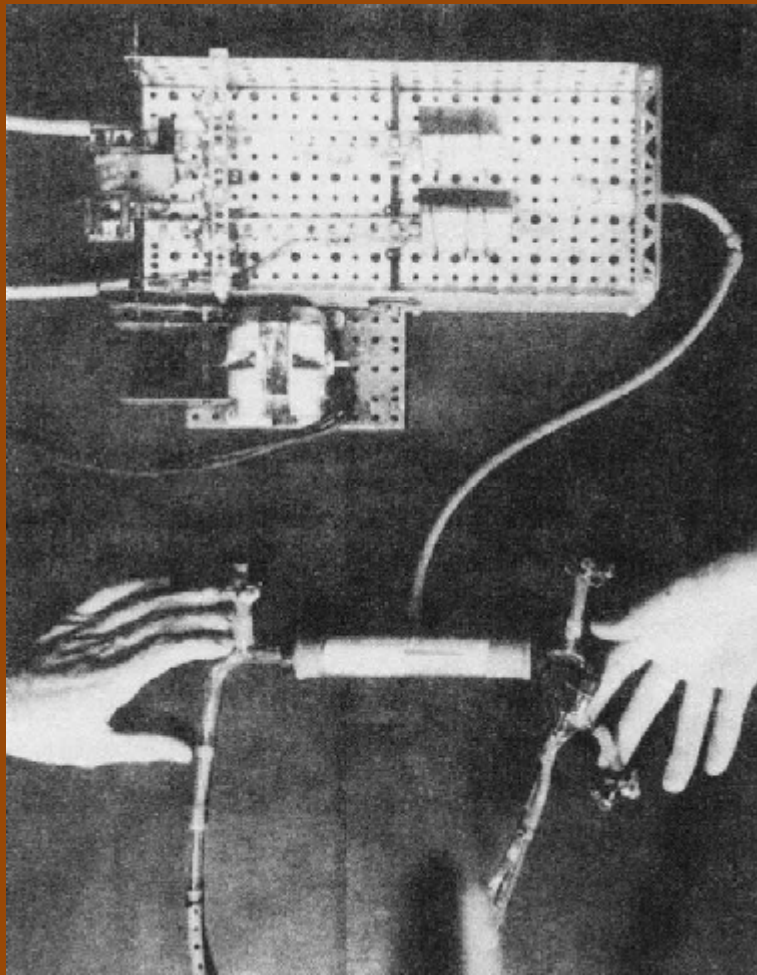


Pierre
ATHIAS

Pompe Externe de Sewell, 1949

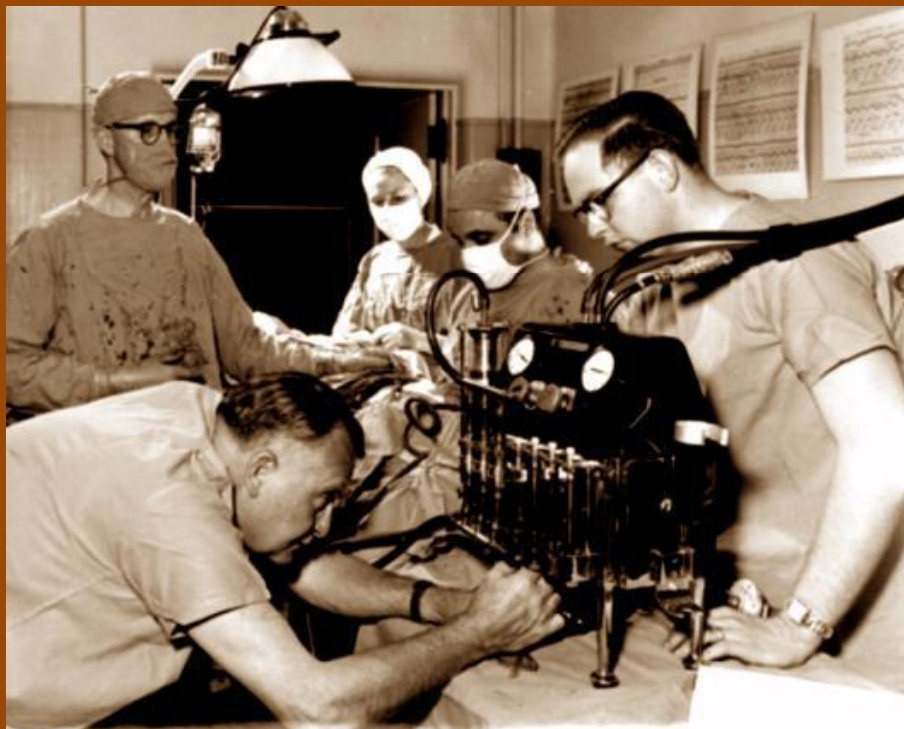


William Glenn



Pierre
ATHIAS

Pompe Externe de Dodrill, 1952





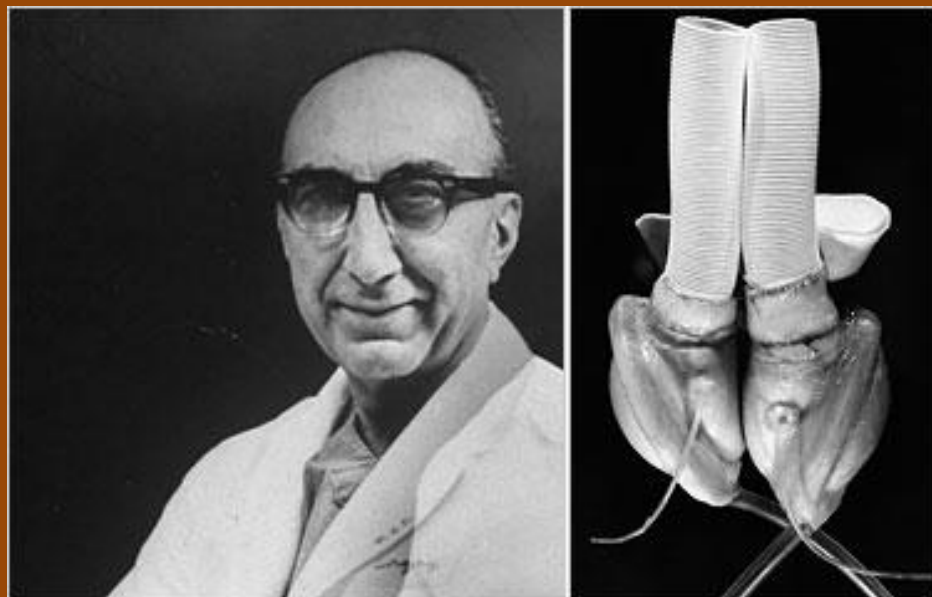
Pierre
ATHIAS

Coeur Artificiel de Kolff, 1957



Pierre
ATHIAS

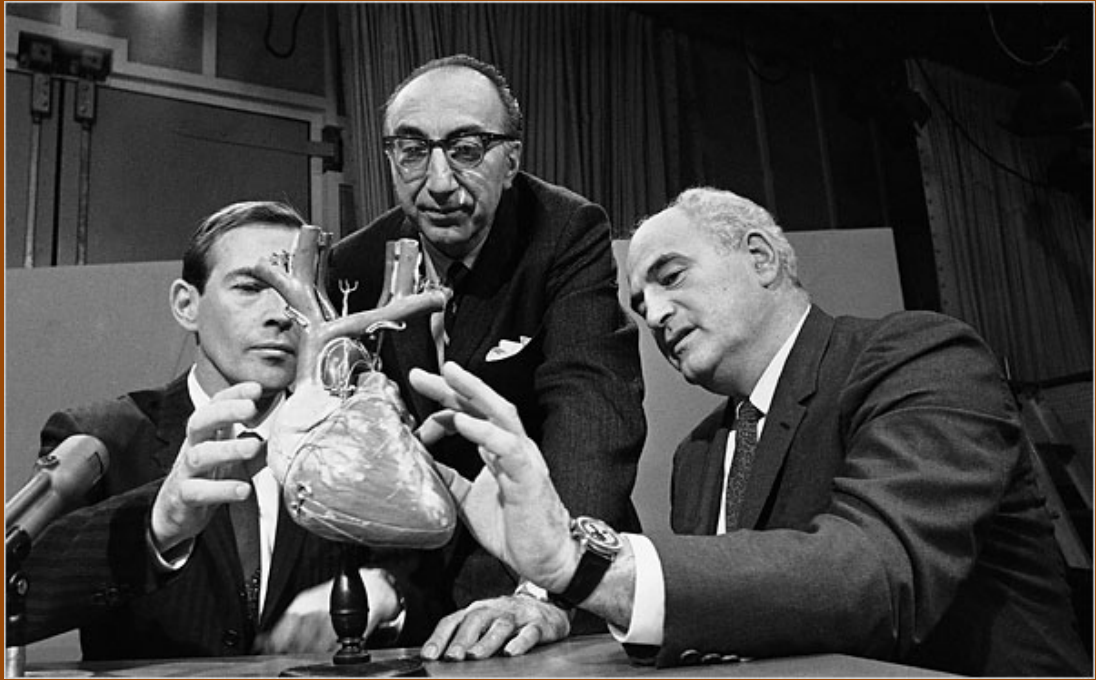
Coeur Artificiel de DeBakey, 1962





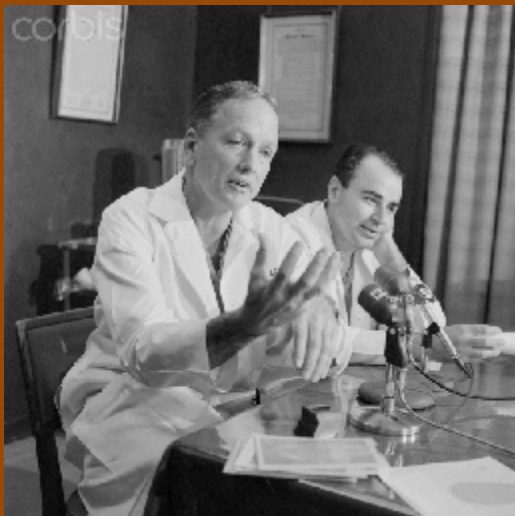
Pierre
ATHIAS

Transplantation Cardiaque, Chris Barnard, 1967



Pierre
ATHIAS

Coeur Artificiel de Cooley & Liotta, 1969





Pierre
ATHIAS

Transplantation Cardiaque, Pr Christian Cabrol, 1968

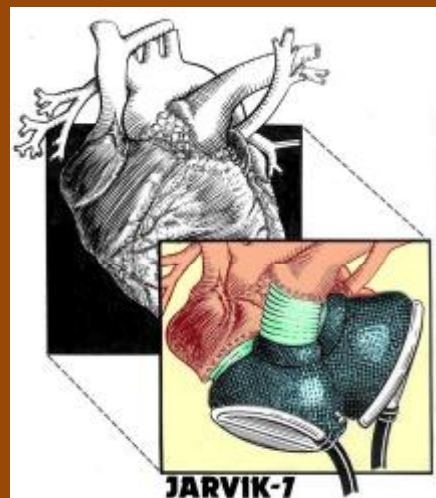


Pierre
ATHIAS

Coeur Artificiel Jarvik 7, 1982



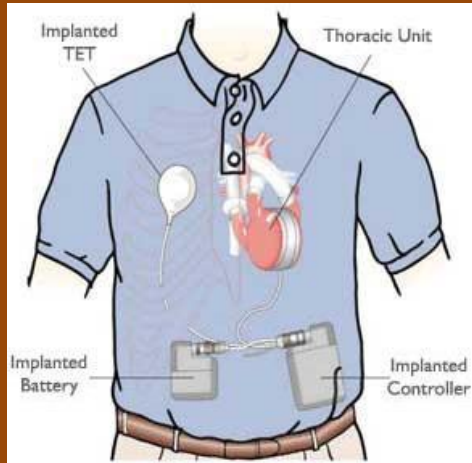
Dr. Robert Jarvik &
William De Vries





Pierre
ATHIAS

Coeur Artificiel ABIOCOR, 2001



Pierre
ATHIAS

SynCardia temporary CardioWest™





Pierre
ATHIAS

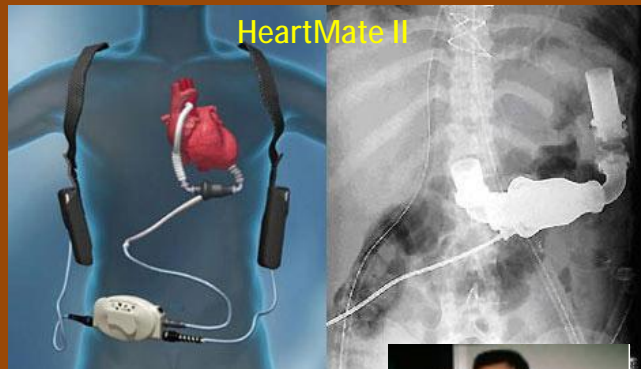


Pierre
ATHIAS

Coeurs Artificiels Partiels (assistances Ventriculaires)



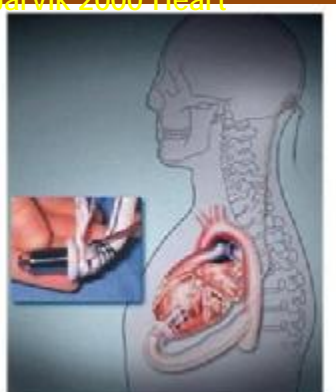
ABIOMED AB5000™



HeartMate II



Jarvik 2000 Heart



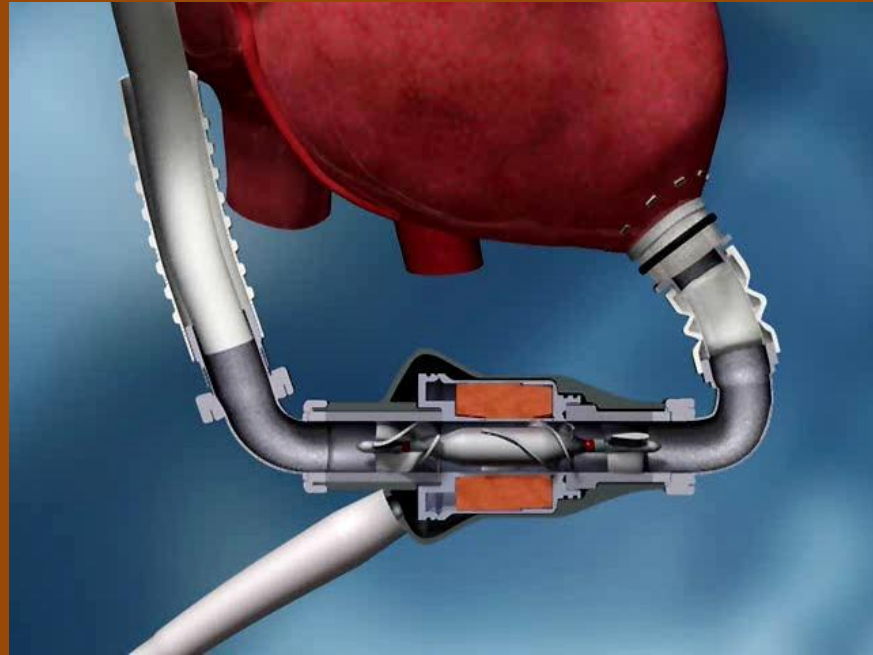
THORATEC CORPORATION





Pierre
ATHIAS

Heartmate II (Thoratec)



Pierre
ATHIAS

Témoignage Dijonnais: « Mon Cœur en Bandoulière »

- 4 patients équipés
- Heartmate II
- 1 patient > 3 ans
- record monde:
1 patient > 8 ans





Pierre
ATHIAS

Les « Périphériques »...



Thoratec

console



SynCardia temporary CardioWest™



CAUTION — The Freedom™ driver is an investigational device, limited by United States and EU law to investigational use.



Freedom™ driver



Big Blue driver

CAUTION — The Freedom™ driver is an investigational device, limited by United States and EU law to investigational use.



Pierre
ATHIAS

Projet Carpentier-Matra: CARMAT



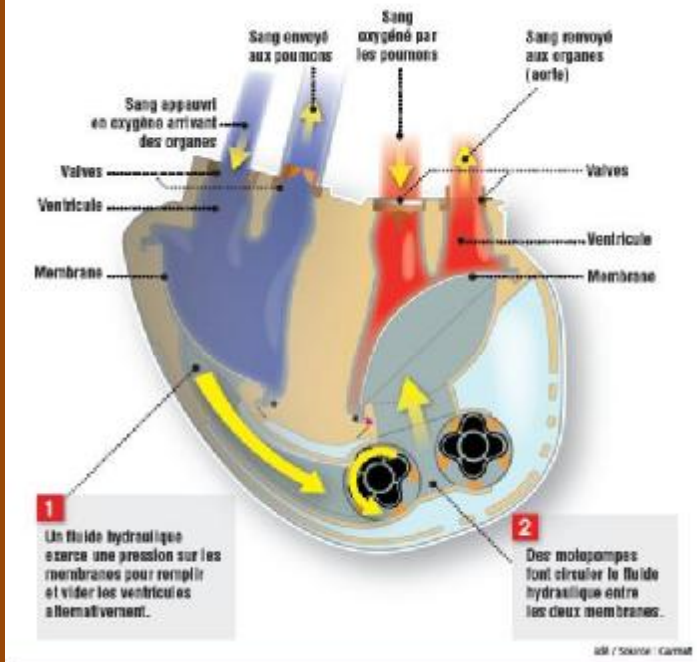


Pierre
ATHIAS

Projet CARMAT



Le fonctionnement du cœur artificiel



Pierre
ATHIAS





Pierre
ATHIAS



Carmat s'envole en Bourse, son cœur artificiel bientôt implanté

Source: Capital

Ajouter un commentaire

Twitter Facebook LinkedIn StumbleUpon



Marchés boursiers	
CARMAT	25,00%
ERCS	5,45%

Plusieurs fois suspendue à la hausse ce matin, tant la demande était importante, l'action Carmat s'envolait de plus de 20% à 11 heures, évoluant au-dessus de 190 euros.

Carmat autorisé à effectuer les premières implantations humaines de son cœur artificiel

Publié le Mardi 14 mai 2013



Carmat, la société française qui développe un projet de cœur artificiel total, a annoncé mardi avoir obtenu l'autorisation de quatre centres de chirurgie cardiaque de renommée internationale en Belgique, en Pologne, en Slovénie et en Arabie Saoudite pour effectuer les premières implantations humaines de son cœur artificiel total bioprothétique.

Ces établissements sont le Centre Hospitalier Universitaire (CHU) Saint-Pierre (Bruxelles, Belgique), le Silesian Center for Heart Diseases (Zabrze, Pologne), le University Medical Centre Ljubljana (Ljubljana, Slovénie) et le Prince Sultan Cardiac Center (Riyad, Arabie Saoudite).



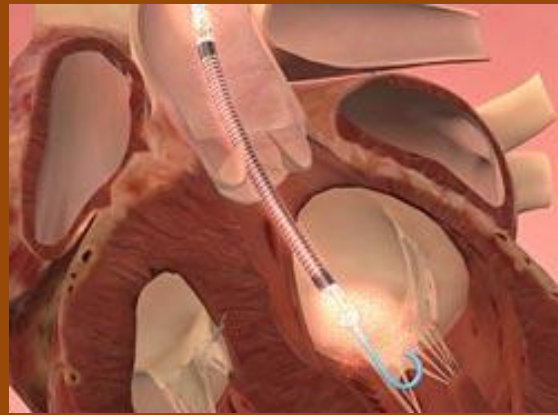
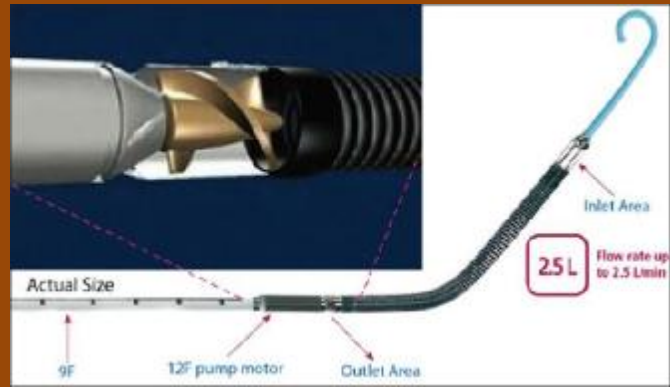
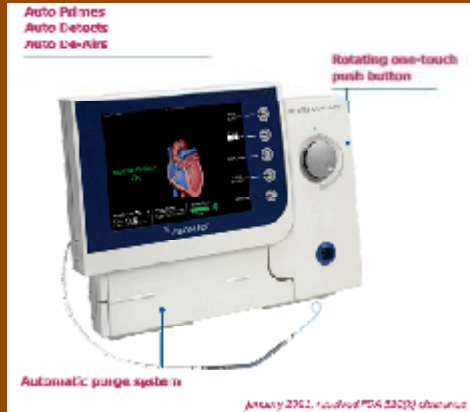
Pierre
ATHIAS





Pierre
ATHIAS

ABIOMED Impella



Pierre
ATHIAS

ABIOMED Impella



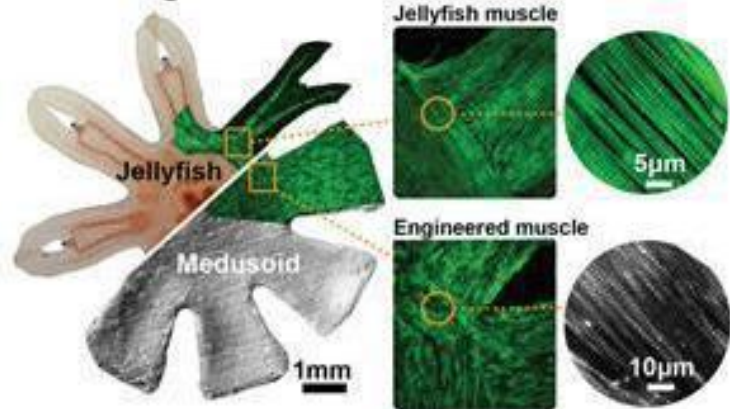


Pierre
ATHIAS

Body design



Muscle design



Pierre
ATHIAS





Pierre
ATHIAS

