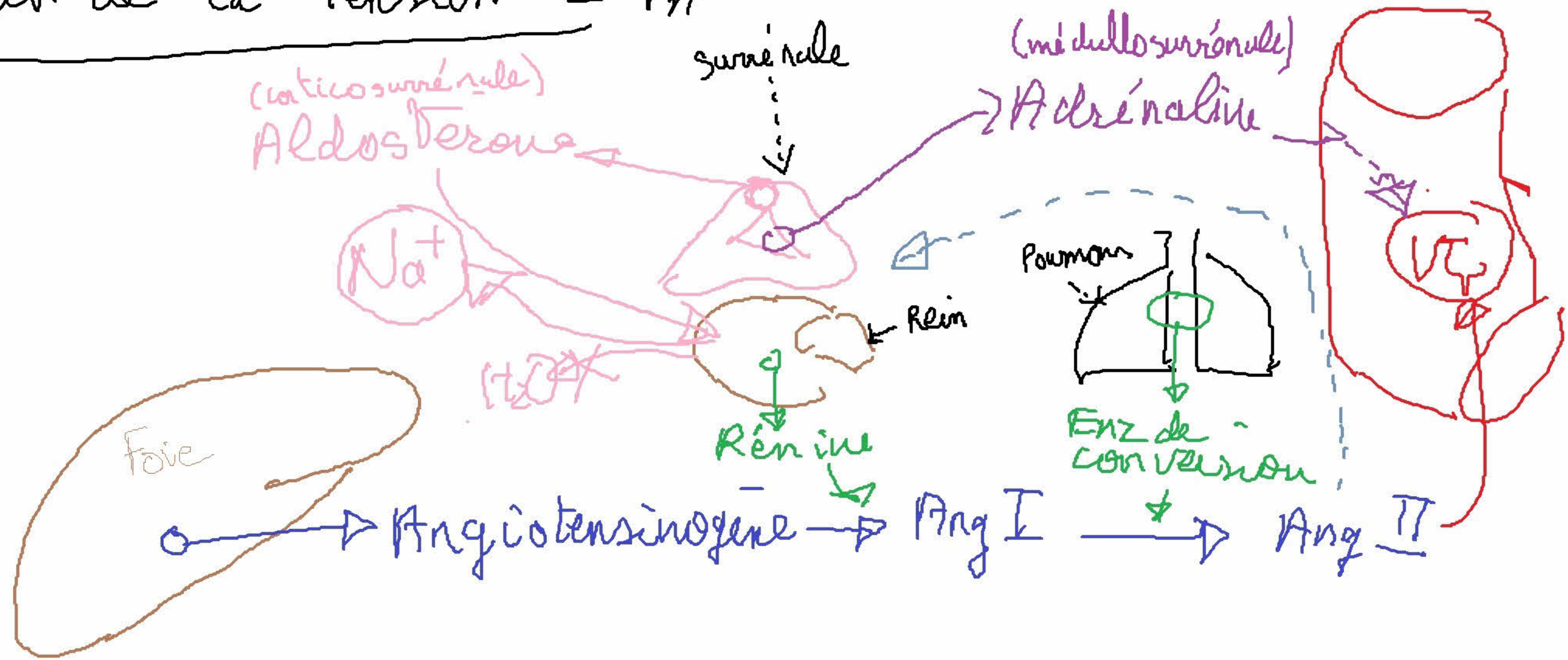
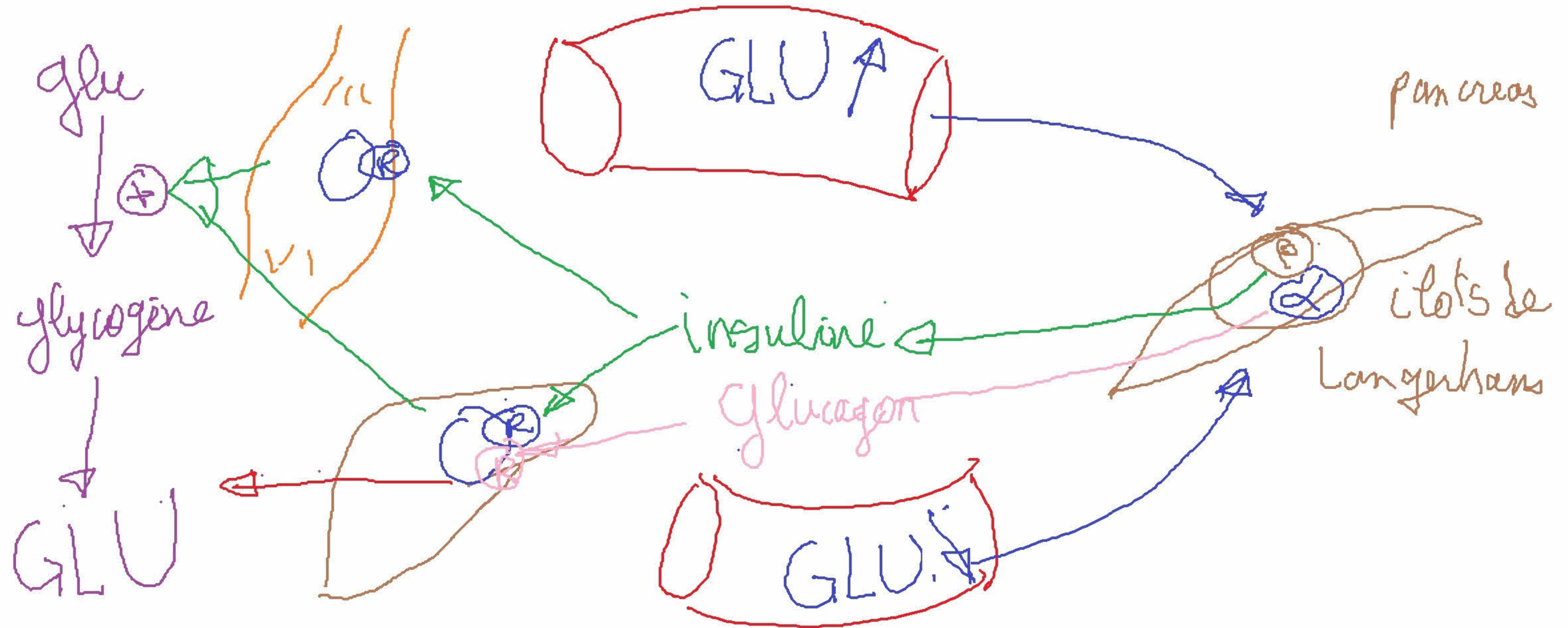


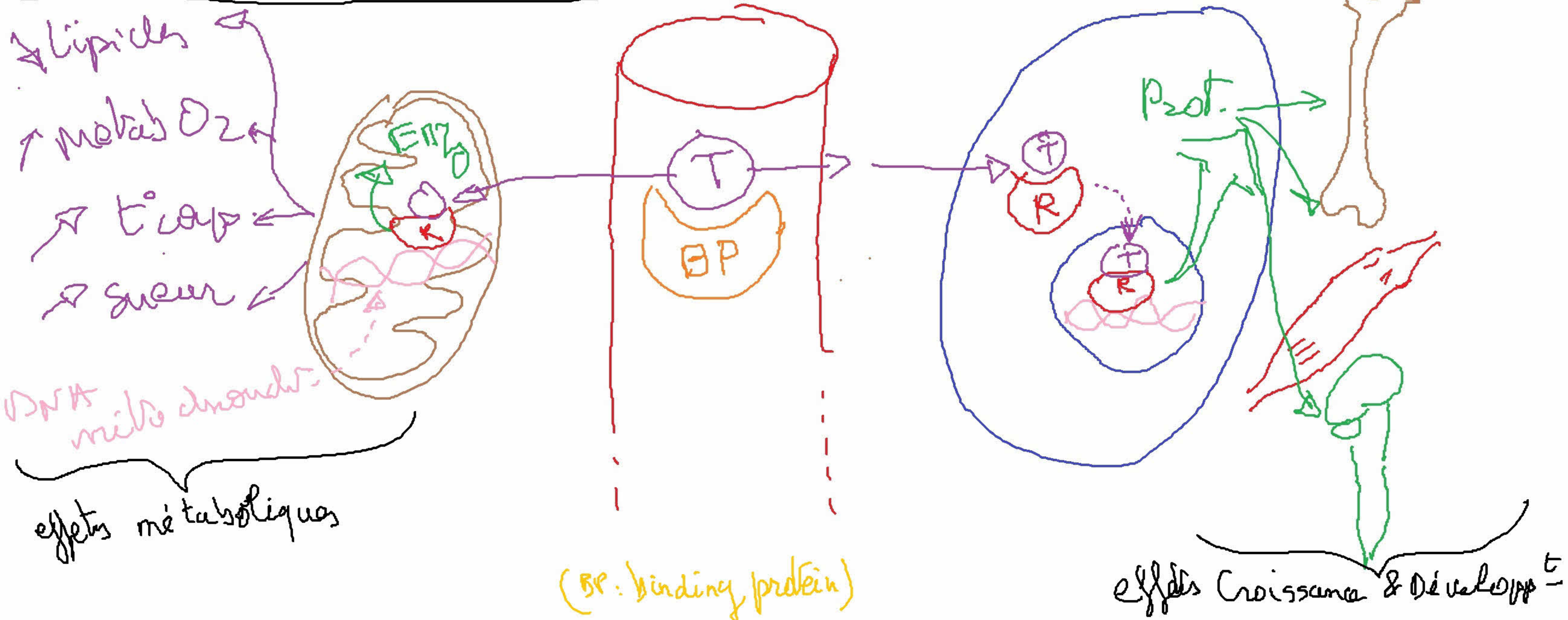
I - Régulation de la "Tension" = PA



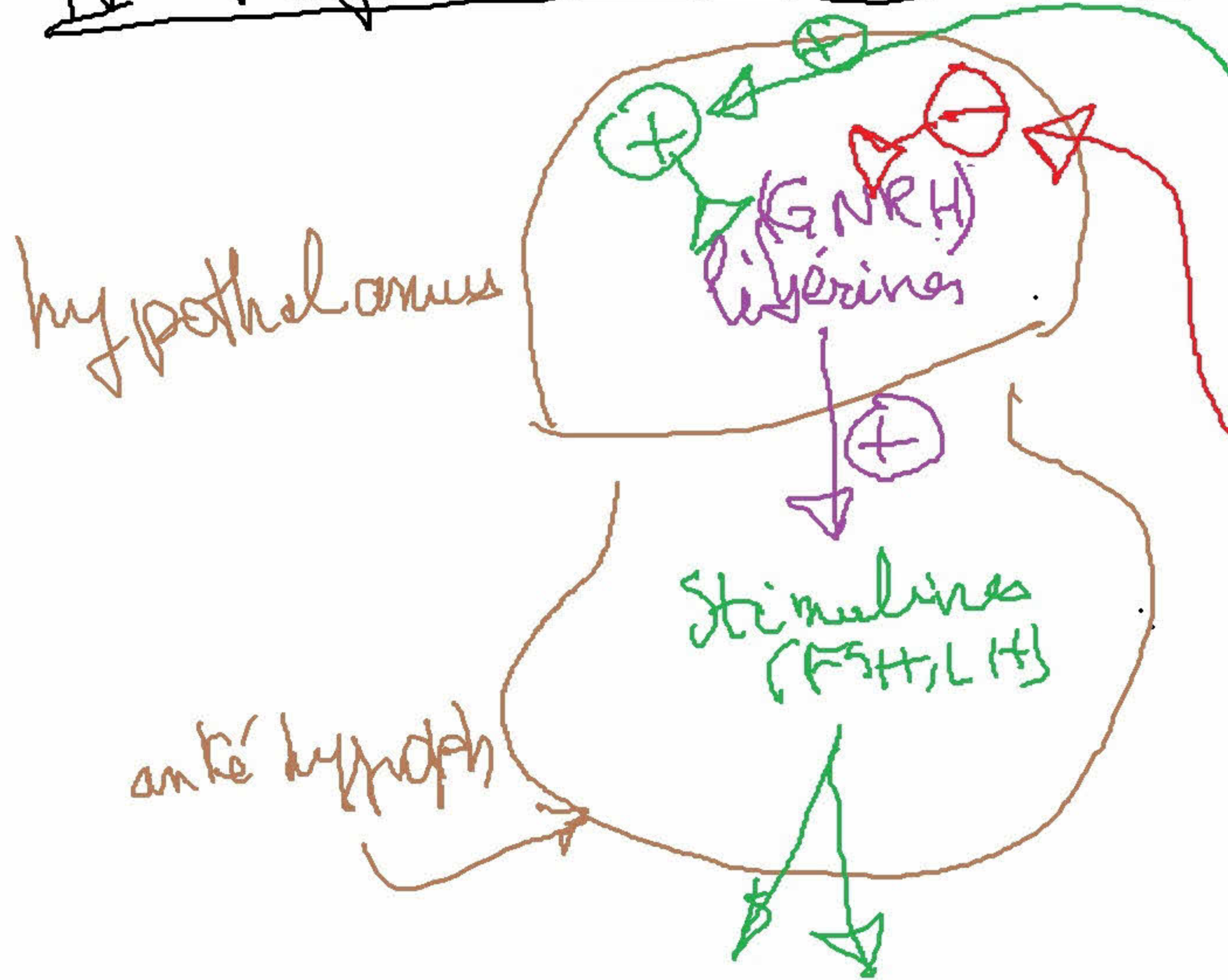
II - régulation de la glycémie.



III - Actions des H. Thyroïdiennes (T3, T4)

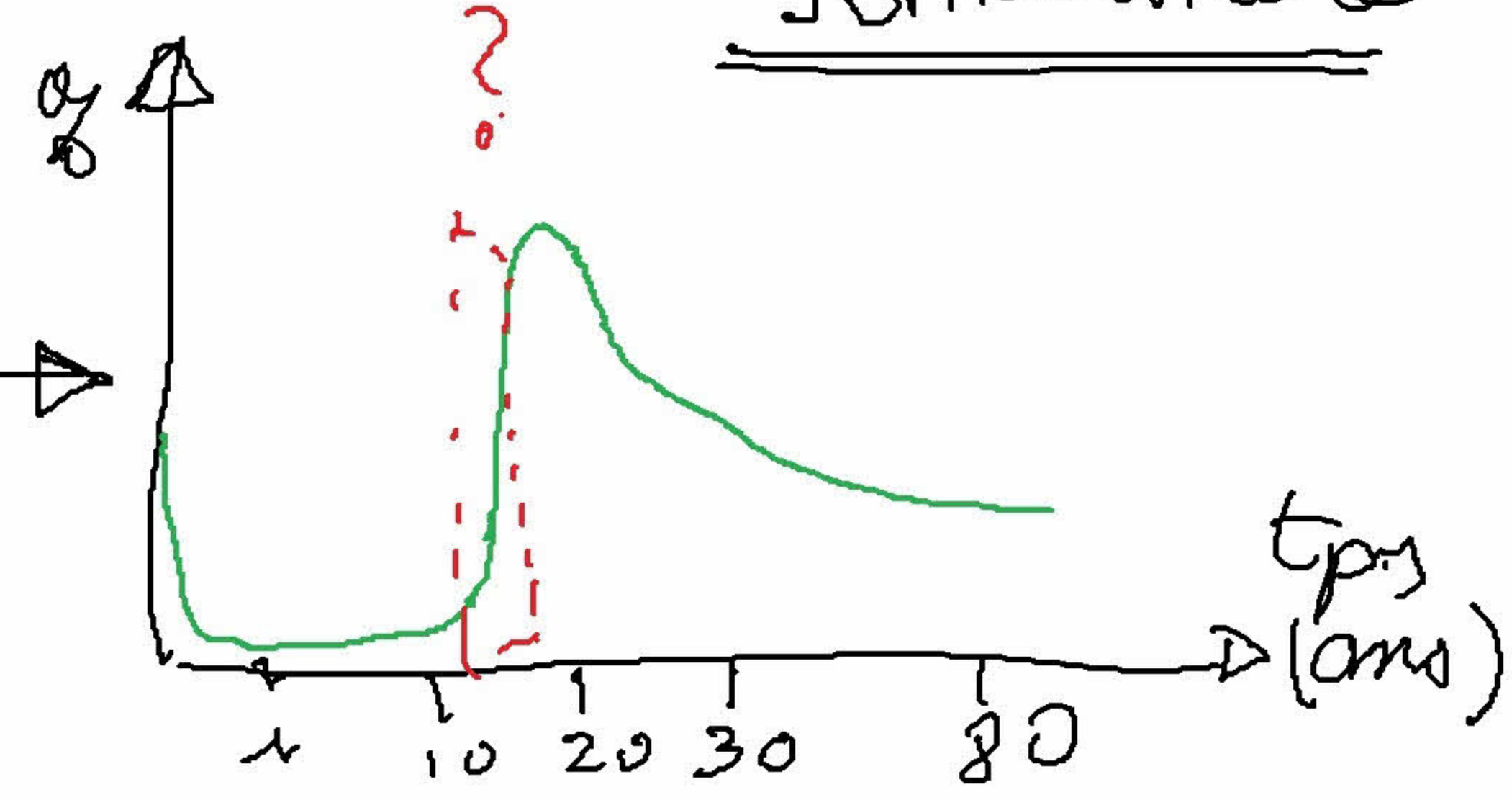
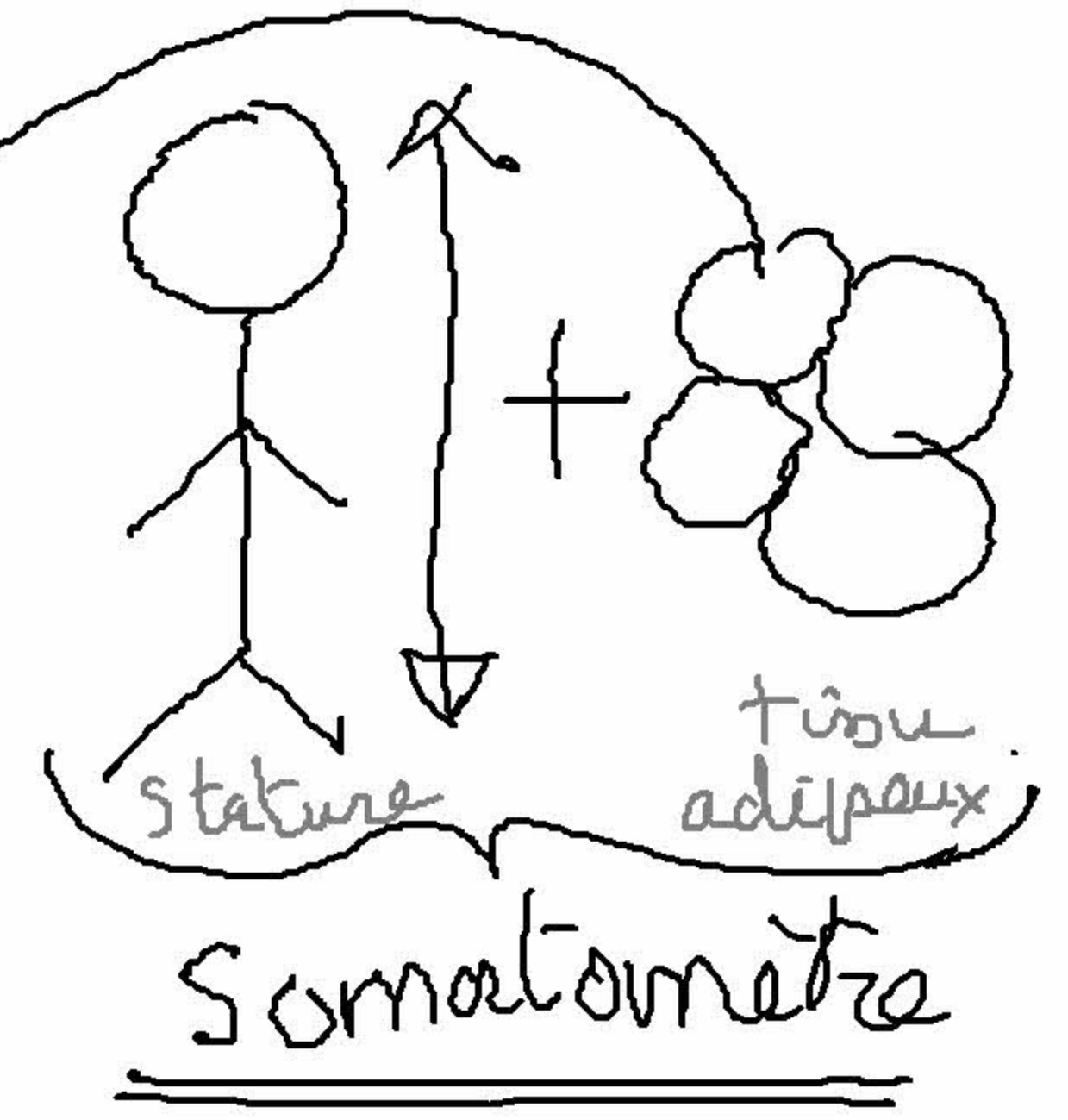


IV - Régulation de la Puberté

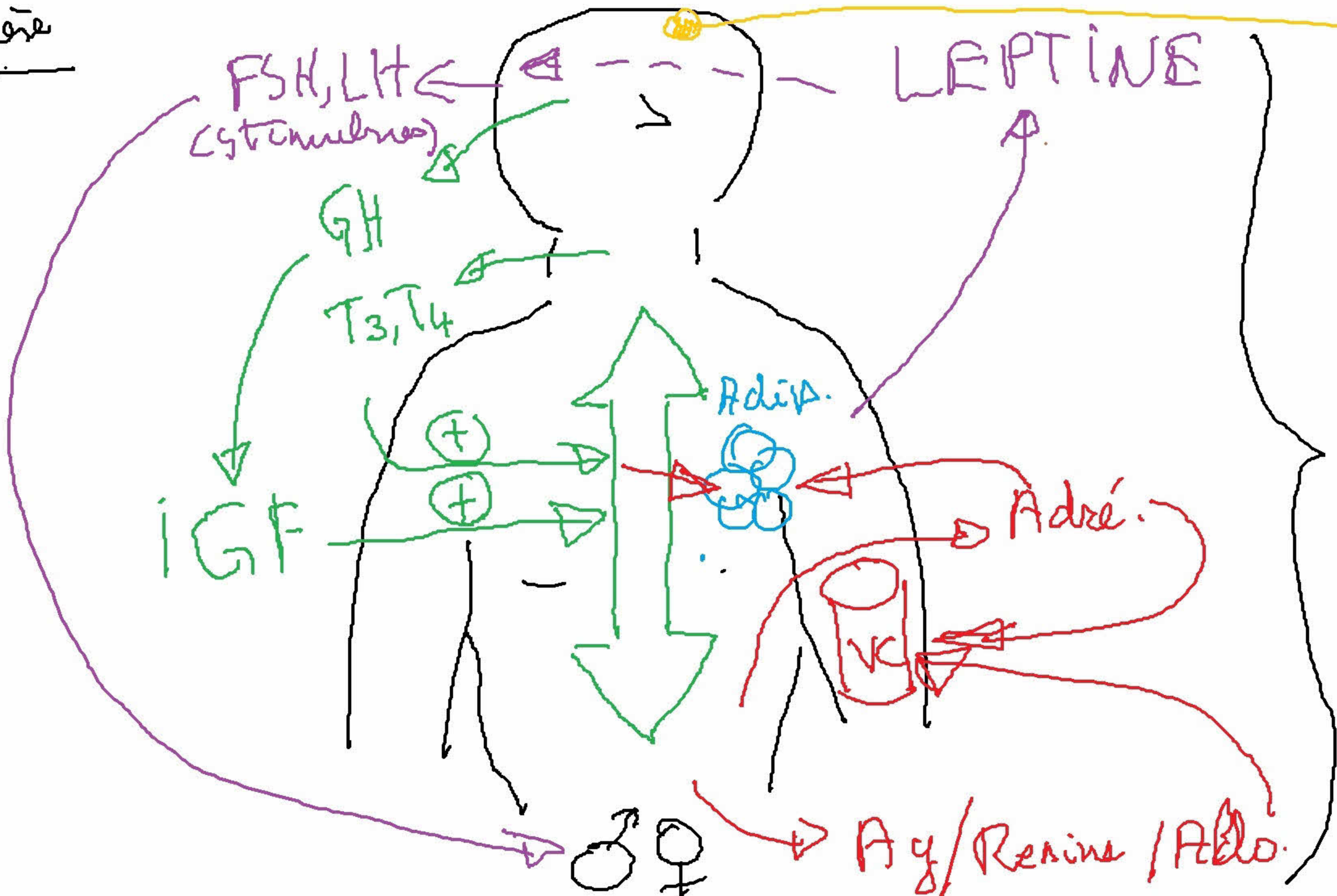


Haute
LEPTINE

BASSE
SPORT +
obésité



VI - Synthèse



Métabolisme

~~Leptine~~
contrôle
TOUT