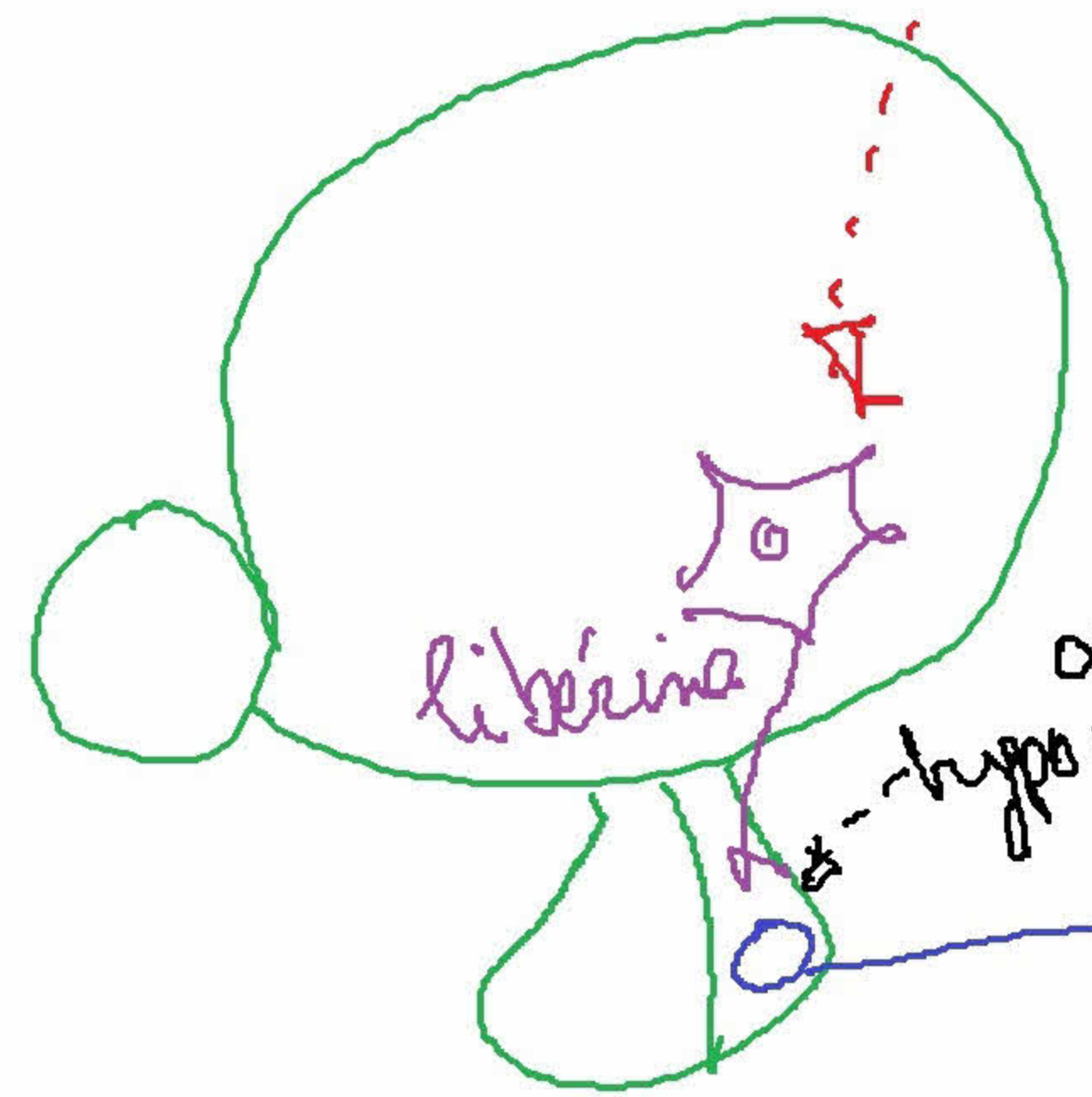


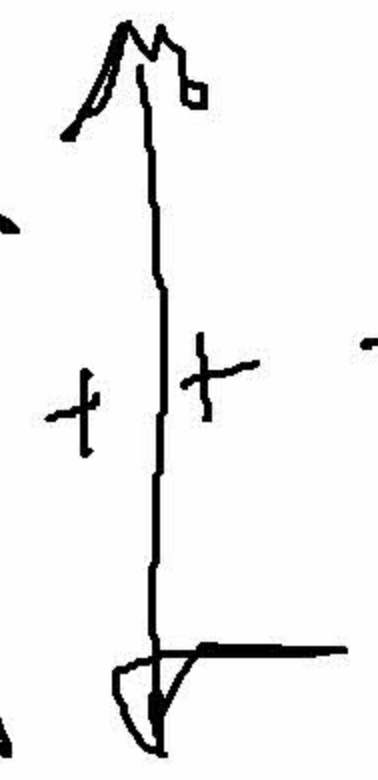
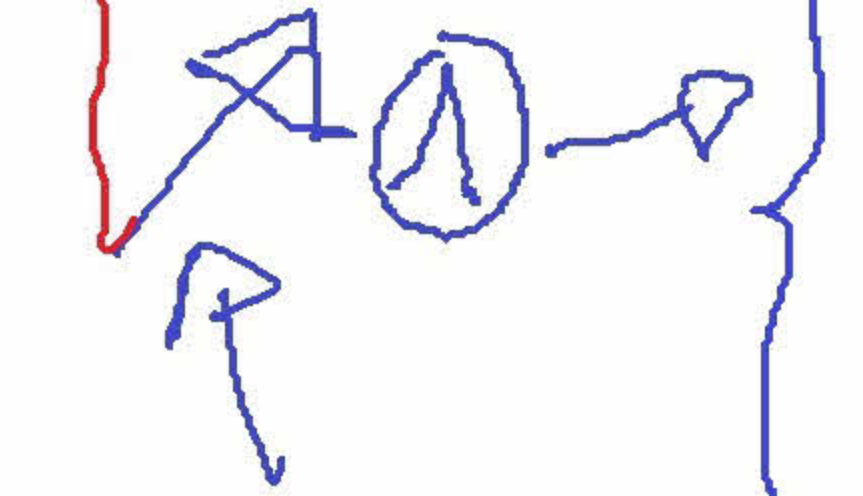
Maladies de l'hypophyse



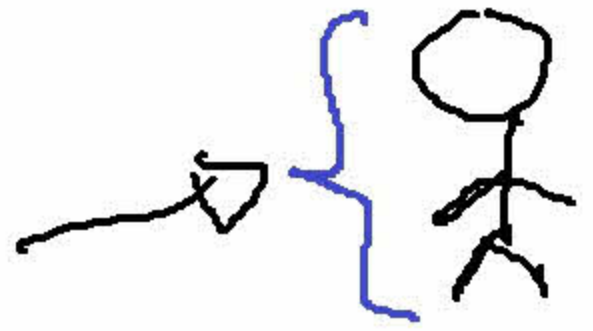
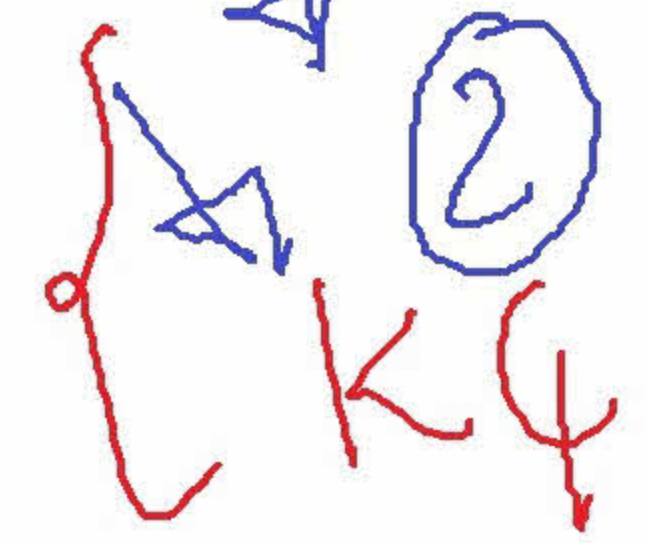
antibodies  
m. autoimmunes

anté-  
hypo

adénome

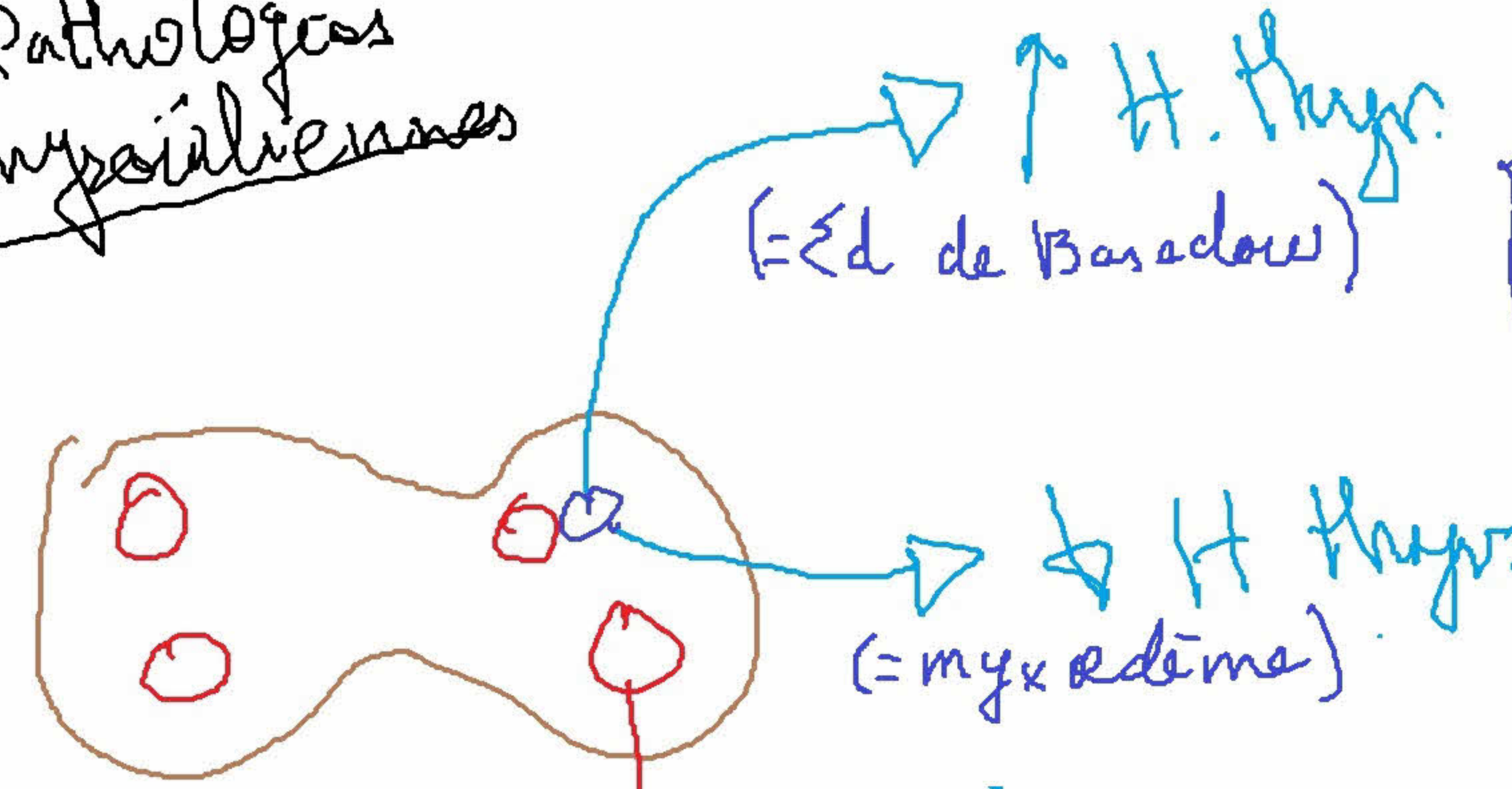


GH  
(stimulike)



nanisme

II- Pathologies  
thyroïdiennes



- ↑ E<sup>0</sup> C
  - ↑ FC
  - Pds ↓
  - exophthalmie
- 
- ↓ E<sup>0</sup> C
  - Pds ↑
  - apathie

○ adénome  
○ A.G.  
(stimulant)

○ m.  
autoimmune

g. parathyroïdes

- ↑ PTH  $\xrightarrow{\uparrow Ca^{2+}}$
- ostéoporose
  - fracture
  - nerv. digestif...
- ↓ PTH  $\xrightarrow{\downarrow Ca^{2+}}$
- tétanie
  - cataracte
  - nerv.

○ adénome  
○ KC  
○ ↓ vit D

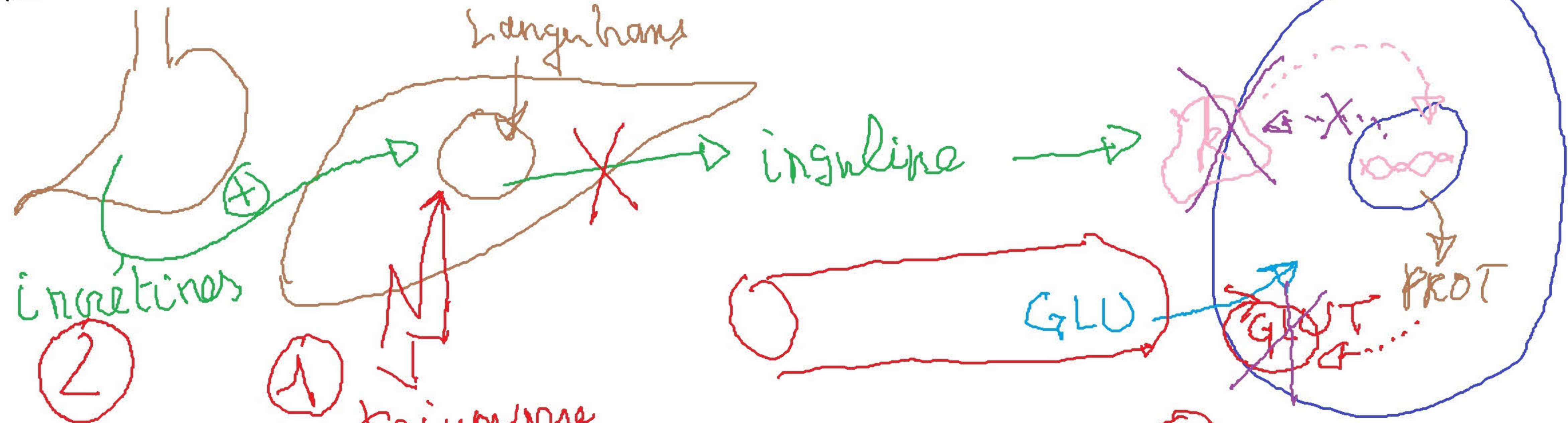
○ m.  
autoimmunes

PTH = parathormone  
AC : anticorps

# III - Le diabète

îlots de Langerhans

↳ foie, muscles, ...



②  
insulines

① m. auto-immune

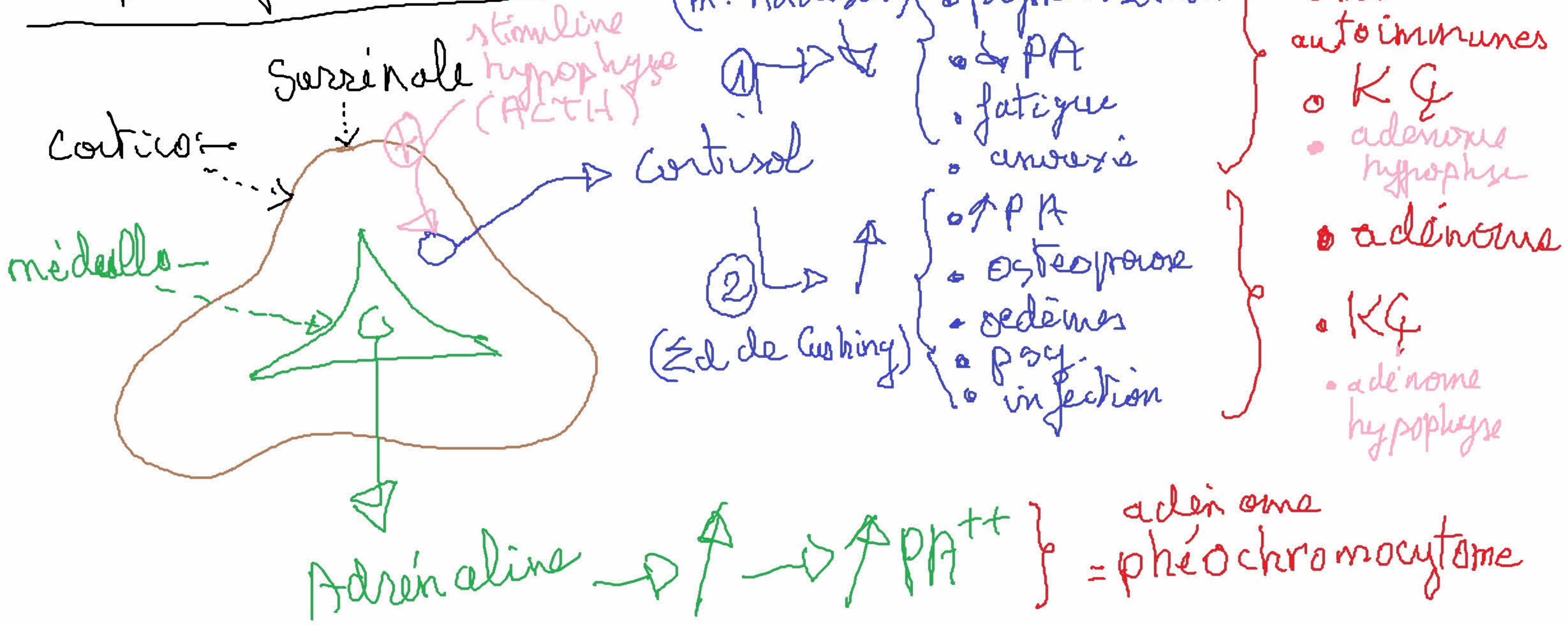
(diab. insulino-dépendant)

- R: récepteur de l'insuline
- GLUT: transporteur du glucose

② (diab. insulino-dépendant)

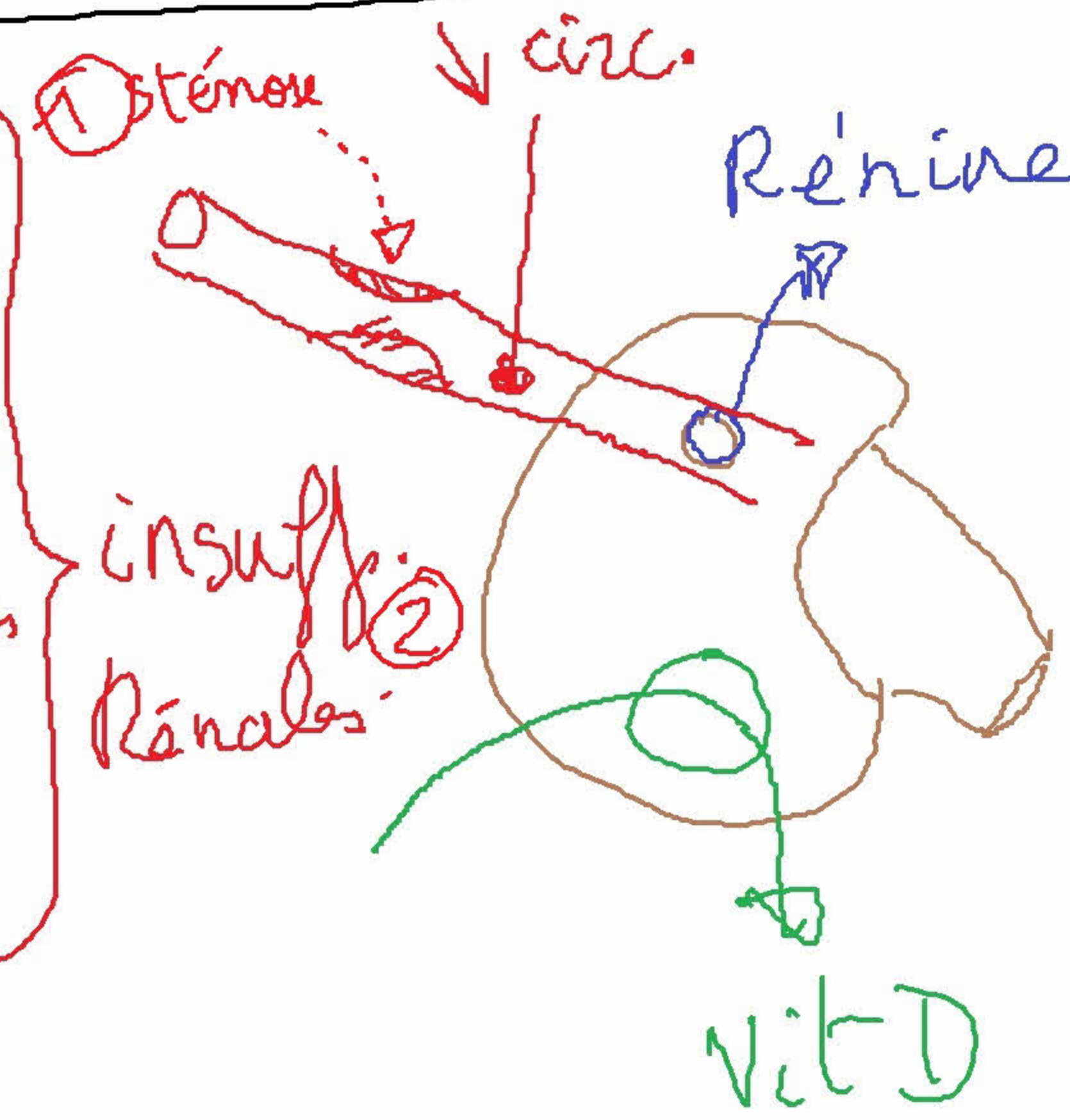
- ↑ graisse
  - obésité
  - sédentarité
- Resistant

# III - pathologies surrénaliennes



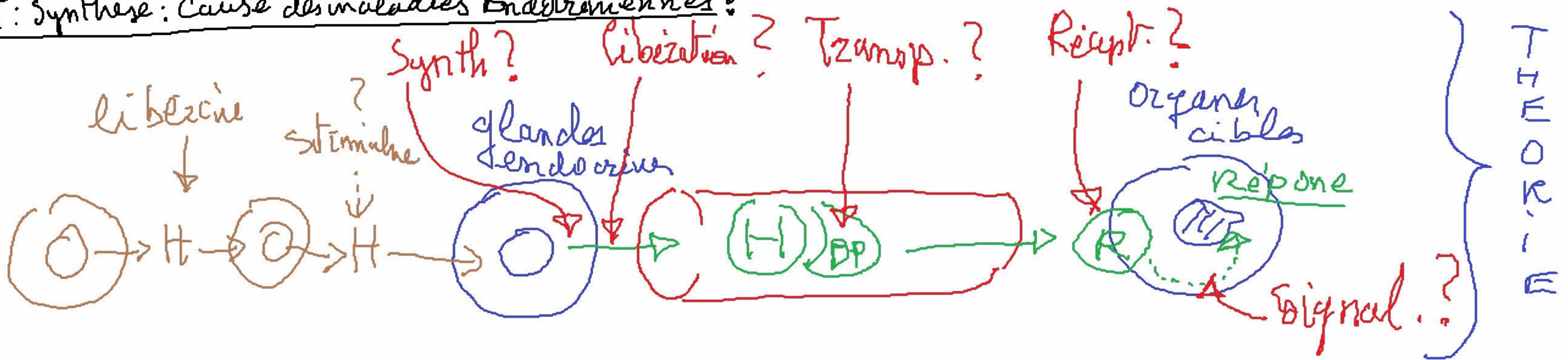
# V - Pathologies Rénales

- Diabète.
- HTA
- m. autoimmunes
- Tox. :  
métracamp  
Loward.

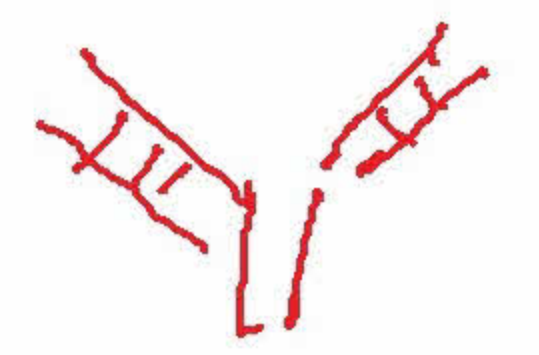


- Ag2 : angiotensine 2
- VC : vasoconstriction
- HTA : hypertension artérielle

VI: Synthèse: Cause des maladies Endocriniennes:



- ⊙ Adénomes, KQ
- ⊙ autoimmunes:



HYPOTHALAMUS

---

PITUITAIRE